

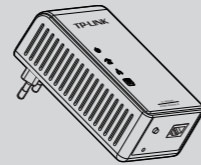
## Quick Installation Guide

300Mbps/150Mbps AV200  
Wireless N Powerline Extender

MODEL NO. TL-WPA281/TL-WPA271

## Package Contents

**Note** This Guide, shared by TL-WPA281 and TL-WPA271, takes TL-WPA281 for example.



Powerline Extender\*



QIG



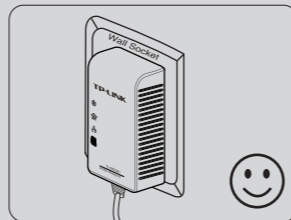
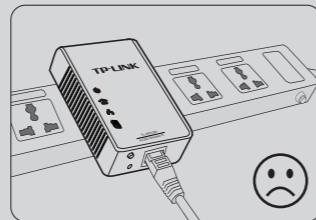
Resource CD



Ethernet Cable

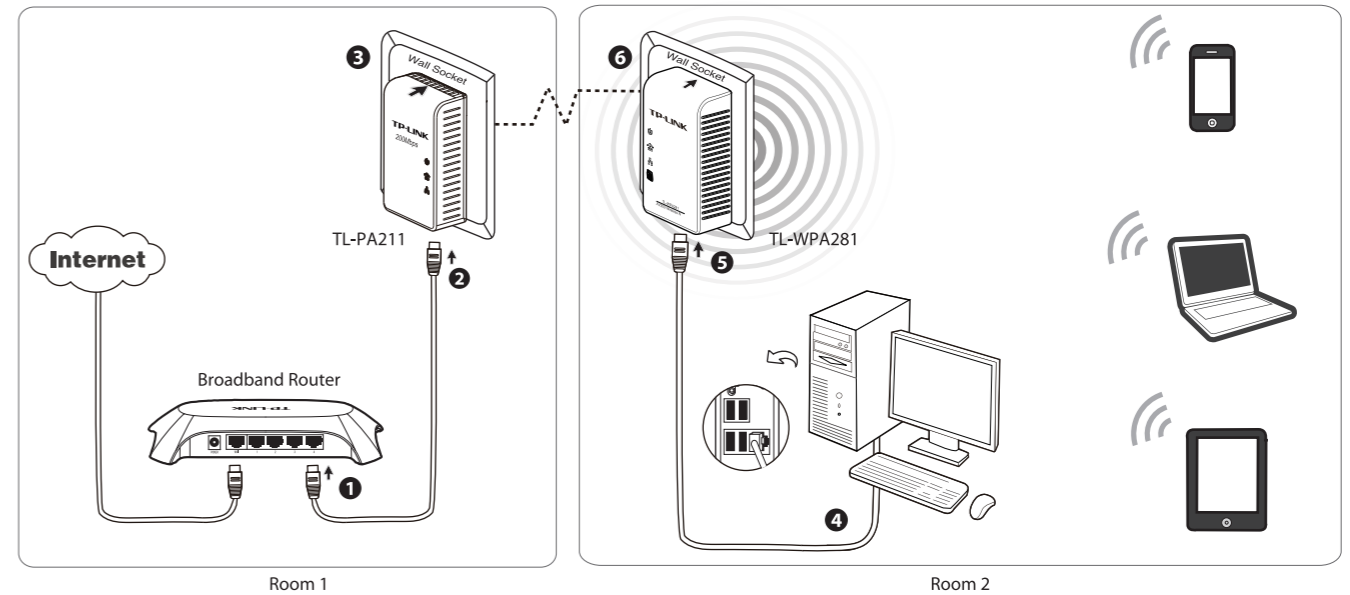
\* The provided power plug may differ from the picture due to different regional power specifications. Here we take the EU version as an example.

### Warning Before Installation



## 1 Hardware Connection

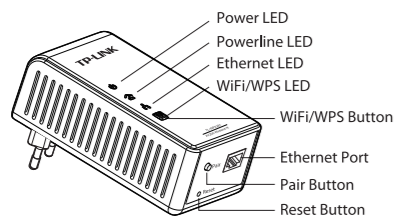
Before connecting the powerline devices, please make sure that your PC can successfully access the Internet via the router.



#### NOTE:

- As soon as the powerline devices are connected as above and the Powerline LED is on, a usable powerline network is available. You have joined the home network and can surf the Internet now.
- To configure wireless security, please refer to **Configuring the Powerline Extender** below. It is strongly recommended that you set a passphrase for your wireless network to prevent outside intrusion.
- To connect to the wireless network, please refer to **Connecting to Wireless Network** on the next page.
- To quickly establish a secure powerline network, please follow the method in **Appendix: Pair Button** on the next page.

## 2 LED and Button Description



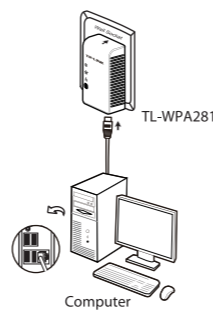
\* For advanced settings, please refer to the User Guide included in the Resource CD.

| LEDs | Status           | Description   |
|------|------------------|---|
|      | Solid            | The device is on.   |
|      | Off              | The device is off.  |
|      | Solid            | The device is connected to a powerline network.                         |
|      | Off              | The device isn't connected to any powerline network.                    |
|      | Blinking         | The device is transferring data.  |
|      | Solid            | The Ethernet port is connected, but there is no data being transferred. |
|      | Off              | The Ethernet port isn't connected.                                      |
|      | Blinking         | The Ethernet port is transferring data.                                 |
|      | Solid            | Solid light for 300 seconds indicates successful WPS connection.        |
|      | Off              | The wireless function has been disabled.                                |
|      | Blinking slowly  | The extender is waiting for client devices to connect to it by WPS.     |
|      | Blinking quickly | The wireless function has been enabled.                                 |

| Buttons         | Description  |
|-----------------|--|
| Reset Button    | Press the Reset button for approximately 10 seconds, the device will restore to its factory default settings.  |
| Pair Button     | Pair buttons are used to secure a powerline network. For specific configuration procedures, please refer to <b>Appendix: Pair Button</b> .                 |
| WiFi/WPS Button | Press the button for 2 seconds, the extender will wait for WPS connection. Pressing the button for 5 seconds will enable or disable the wireless function. |

## Configuring the Powerline Extender

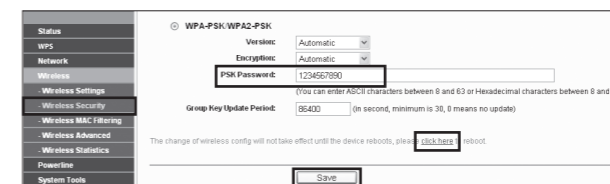
- Connect the extender with your computer. Then insert the Resource CD into the CD-ROM drive.
- Click model TL-WPA281 and select **Management Utility**.
- Find the model to be configured and click **Connect** to log in the Web-based management utility.
- Enter the default user name **admin** and default password **admin** to log on.



**Note** This utility is currently supported in Windows 2000/XP/Vista/7.



- Go to **Wireless->Wireless Settings**. Configure your network name (SSID) and click **Save**.
- Go to **Wireless->Wireless Security** to set a password for the device to prevent outside intrusion. Click **Save** and then click **click here** to reboot the device so that your settings can take effect.
- If you have another TL-WPA281, repeat the steps above to configure it. After setup, wireless devices can access the extender. For specific procedures, please refer to **Connecting to Wireless Network**.

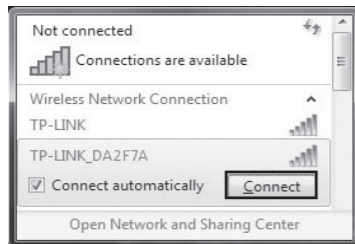


# Connecting to Wireless Network

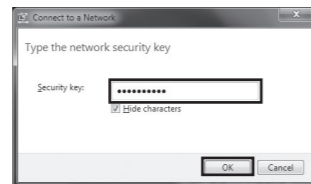
The default SSID is TP-LINK\_XXXXXX. (XXXXXX stand for the last six unique numbers of the WLAN MAC which can be found on the label at the bottom of the device.)

## For Windows 7

- 1 Click the icon  at the bottom of your desktop, select the SSID of TL-WPA281 and then click **Connect**.

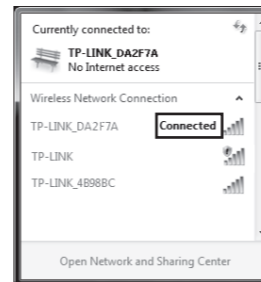


- 2 Input the network key (the password set in **Configuring the Powerline Extender**) and then click **OK**.



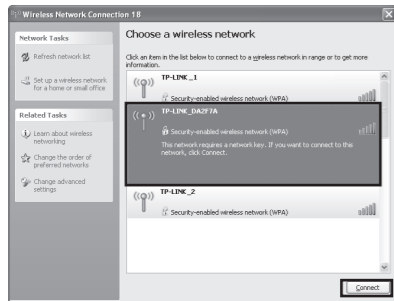
**Note** If your network is an unsecured network, you will not be prompted to input the network key.

- 3 You have joined the home network and can surf the Internet now.

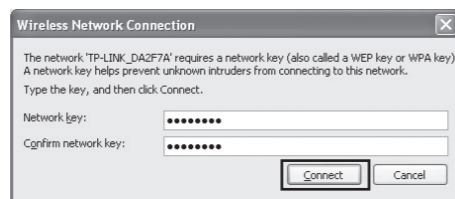


## For Windows XP

- 1 Click the icon  at the bottom of your desktop, select the SSID of TL-WPA281 and then click **Connect**.

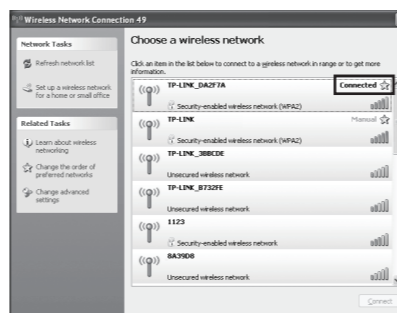


- 2 Input the network key (the password set in **Configuring the Powerline Extender**) and then click **Connect**.




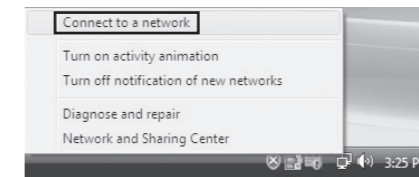
**Note** If your network is an unsecured network, you will not be prompted to input the network key.

- 3 You have joined the home network and can surf the Internet now.

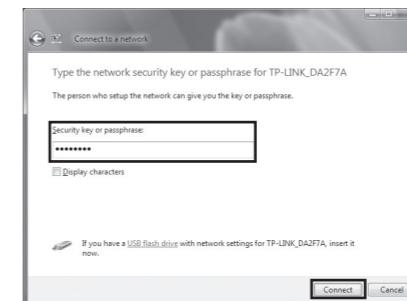


## For Windows Vista

- 1 Right-click the icon  at the bottom of your screen, then click **Connect to a network**.

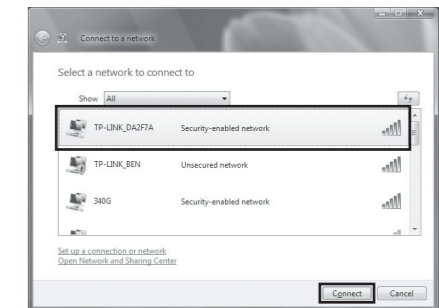


- 3 Input the network key (the password set in **Configuring the Powerline Extender**) and then click **Connect**.

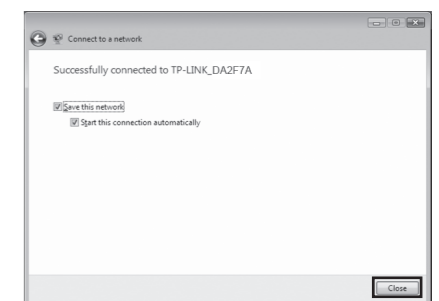


**Note** If your network is an unsecured network, you will not be prompted to input the network key.

- 2 Select the SSID of TL-WPA281 and then click **Connect**.



- 4 Click **Close** to finish the connection. You have joined the home network and can surf the Internet now.

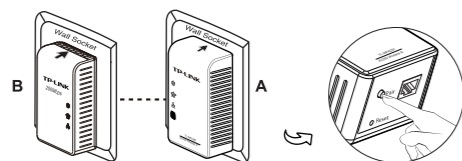


## Appendix: Pair Button

You can use the Pair button on only two devices at a time.

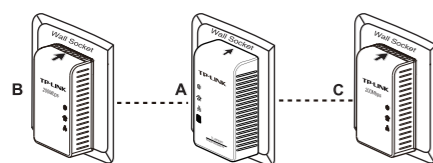
To create a powerline network using the Pair button, follow the steps below.

1. Press and hold the Pair button of A (TL-WPA281) for one second.
2. Within two minutes, press and hold the Pair button of B (another TL-WPA281 or another powerline adapter like TL-PA211) for one second (if you use another TL-WPA281). Then the connection is established.



To join an existing powerline network, follow the steps below.

1. Press and hold the Pair button of C (another powerline device) for three to eight seconds (or one second if you use another TL-WPA281).
2. Within two minutes, press and hold the Pair button of A or B for appropriate seconds. Then the connection is established.



To leave an existing powerline network, press and hold the pair button on the extender for at least ten seconds.

**Note** For more information about Pair Button, please refer to the User Guide included in the Resource CD.

## Troubleshooting

### The Power LED does not light up.

Check the following:

1. Make sure that the Powerline Extender is properly plugged into a wall socket.
2. Make sure the power outlet is active (working) by plugging another electric device into it.
3. Plug the Powerline Extender to the power outlet again.

Contact your local dealer for technical support if the Power LED still fails to light up.

### The Ethernet LED does not light up.

Check the following:

1. Make sure that the Ethernet cable (RJ-45) is properly connected to the Powerline Extender's Ethernet port and the other end of the Ethernet cable (RJ-45) is properly connected to the computer LAN card or to your Cable/xDSL Ethernet port.
2. Make sure your computer LAN card is properly installed and configured.
3. Make sure your Cable/xDSL broadband access is working and configured correctly.

Contact your local dealer for technical support if the Ethernet LED still fails to light up.

### The Powerline LED does not light up.

Check the following:

1. Double-click to enable the Management Utility and click the "Rescan" tab. The Management Utility will automatically detect all other Powerline devices on your powerline network.
2. Try to plug another Powerline Ethernet Adapter into a nearby power outlet and check whether the PLC LED lights up or not.
3. Make sure that the device is plugged into a wall socket instead of a power strip.
4. Follow the method in Appendix: Pair Button to establish the connection again.
5. Reset the device to its factory default values.

Contact your local dealer for technical support if the Powerline LED still fails to light up.

## Technical Support

- For more troubleshooting help, go to [www.tp-link.com/support/faq.asp](http://www.tp-link.com/support/faq.asp)
- To download the latest Firmware, Driver, Utility and User Guide, go to [www.tp-link.com/support/download.asp](http://www.tp-link.com/support/download.asp)

- For all other technical support, please contact us by using the following details:

### Global

Tel: +86 755 26504400  
E-mail: support@tp-link.com  
Service time: 24hrs, 7 days a week

### Singapore

Tel: +65 62840493  
E-mail: support.sg@tp-link.com  
Service time: 24hrs, 7 days a week

### UK

Tel: +44 (0) 845 147 0017  
E-mail: support.uk@tp-link.com  
Service time: 24hrs, 7 days a week

### USA/Canada

Toll Free: +1 866 225 8139  
E-mail: support.usa@tp-link.com  
Service time: 24hrs, 7 days a week

### Malaysia

Tel: 1300 88 875465 (1300 88TPLINK)  
E-mail: support.my@tp-link.com  
Service time: 24 hrs a day, 7 days a week

### Switzerland

Tel: +41 (0)848 800998  
(German service)  
E-mail: support.ch@tp-link.com  
Fee: 4-8 Rp/min, depending on rate of different time  
Service time: Monday to Friday 9:00 AM to 6:00 PM. GMT+1 or GMT+2 (Daylight Saving Time)

### Australia & New Zealand

Tel: AU 1300 87 5465  
NZ 0800 87 5465  
E-mail: support@tp-link.com.au  
Service time: 24hrs, 7 days a week

### Turkey

Tel: 444 19 25 (Turkish Service)  
E-mail: support.tr@tp-link.com  
Service time: 9:00 AM to 6:00 PM, 7 days a week

### Italy

Tel: +39 02 66987799  
E-mail: support.it@tp-link.com  
Service time: 9:00 AM to 6:00 PM, Monday to Friday

### Indonesia

Tel: (+62 ) 021 6259 135  
E-mail: support.id@tp-link.com  
Service time: Monday to Friday 9:00 -12:00 ; 13:00 -18:00 \*Except public holidays

### Germany / Austria

Tel: +49 1805 875465 (German Service) / +49 1805 TPLINK (German service)  
E-mail: support.de@tp-link.com  
Fee: 0.14 EUR/min from the German fixed phone network and up to 0.42 EUR/min from mobile phone.  
Service Time: Monday to Friday 9:00 AM to 6:00 PM GMT+1 or GMT+2 (Daylight Saving Time in Germany)  
\* Except bank holidays in Hesse