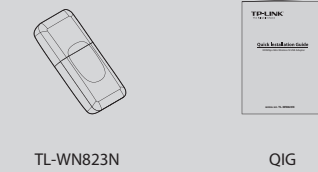


Quick Installation Guide

300Mbps Mini Wireless N USB Adapter

MODEL NO. TL-WN823N

Package Contents



TL-WN823N

QIG

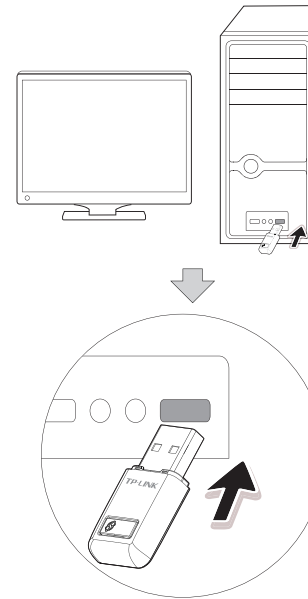


Resource CD

System Requirement

- Windows 7
- Windows Vista
- Windows XP

1 Hardware Connection

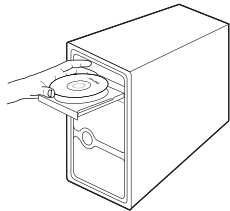


You may see the **Found New Hardware Wizard** after the adapter has been inserted. Please click 'Cancel'.



2 Software Installation (The installation procedures in Windows 7/ Vista/ XP are similar. Here takes the procedures in Windows 7 for example.)

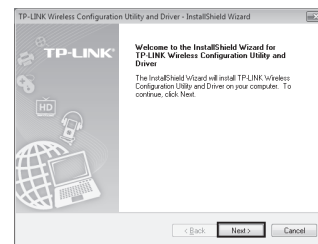
- 1** Insert the TP-LINK Resource CD into the CD-ROM drive.



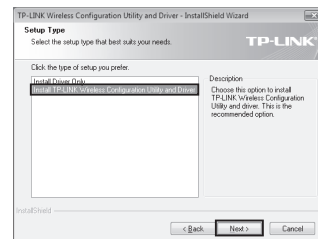
- 2** Find the appropriate model and choose **Install Driver&Utility**.



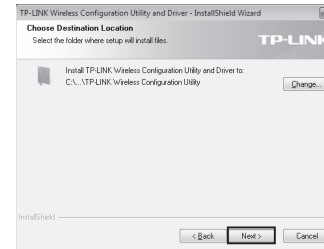
- 3** The **InstallShield Wizard** window will appear. Click **Next** to continue.



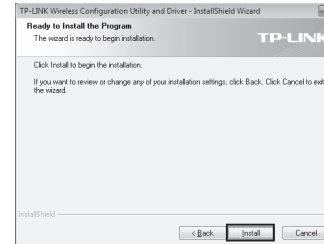
- 4** Select **Install TP-LINK Wireless Configuration Utility and Driver** and then click **Next**.



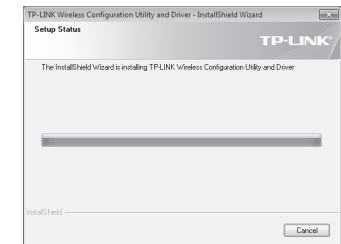
- 5** Click **Change** to specify the destination location or you can leave it default. Click **Next** to continue.



- 6** Click **Install** to install the driver and utility for your adapter.



- 7** The installation of the driver and utility may take 1~2 minutes.

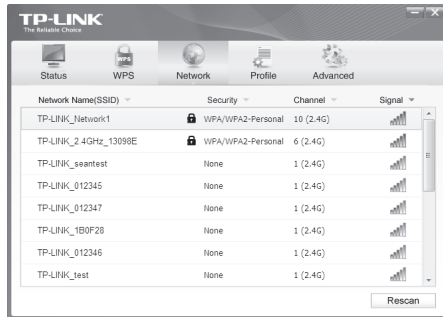


- 8** The following screen will then appear. Click **Finish** to complete the setup.

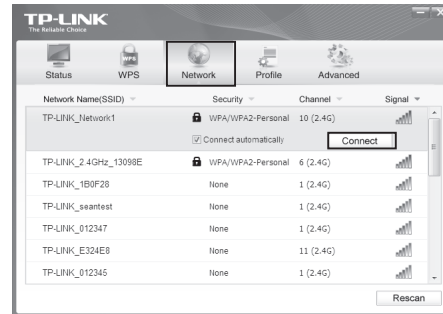


3 Connect to network (You can skip to **Appendix: Connect to Wireless Router by WPS** to quickly connect to a network if your router or access point features WPS or QSS function.)

1 After installation, the configuration page will pop up on your desktop.



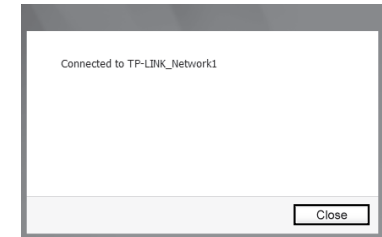
2 Click **Network** in the tools section to display a list of available wireless networks. Highlight the target network name (e.g. TP-LINK_Network1) and then click **Connect** to build a connection.



3 If the network is unsecured, you will directly connect to it. If it is security-enabled, you can input the security key into the field beside **Security Key** and then click **OK** to continue.



4 The following screen indicates successful connectivity. Click **Close** to enjoy the Internet.



5 To view more information about the network connected, click **Status** in the tools section.



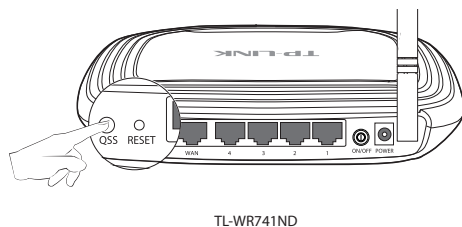
Note The icon will appear on your desktop. Double-clicking on the icon can start the utility.

Note Without entering a key, you can press the WPS button (also called QSS) on your router if the prompt **You can also connect by pushing the button on the router** appears.

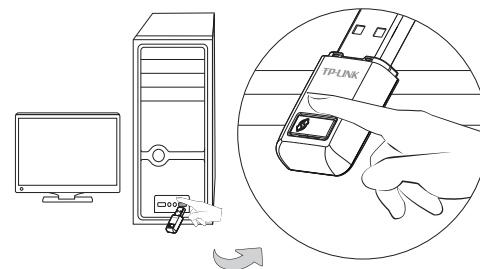
Appendix: Connect to Wireless Router by WPS

If your wireless router features the WPS function (also called QSS), you can also set up a wireless connection in this way.

1 Push the QSS button (also called WPS) on the back panel of the Router. Here takes router TL-WR741ND for example.



2 Push the **WPS button** marked with on the Adapter for 2~3seconds.



3 Wait for a while until the following screen appears. Click **OK** to finish the WPS connection.



Note For detailed instructions of WPS, please refer to the User Guide on the resource CD.

Technical Support

- For more troubleshooting help, go to: www.tp-link.com/support/faq.asp
- To download the latest Firmware, Driver, Utility and User Guide, go to: www.tp-link.com/support/download.asp
- For all other technical support, please contact us by using the following details:

Global Tel: +86 755 26504400 E-mail: support@tp-link.com Service time: 24hrs, 7 days a week	Australia & New Zealand Tel: AU 1300 87 5465 E-mail: support.tr@tp-link.com.au Service time: 9:00 AM to 6:00 PM
Singapore Tel: +65 62840493 E-mail: support.sg@tp-link.com Service time: 24hrs, 7 days a week	Turkey Tel: 444 19 25 (Turkish Service) E-mail: support.tr@tp-link.com Service time: 9:00 AM to 6:00 PM
UK Tel: +44 (0) 845 147 0017 E-mail: support.uk@tp-link.com Service time: 24hrs, 7 days a week	Italy Tel: +39 02 66987799 E-mail: support.it@tp-link.com Service time: Monday to Friday 9:00 AM to 6:00 PM
USA/Canada Toll Free: +1 866 225 8139 E-mail: support.usa@tp-link.com Service time: 24hrs, 7 days a week	Indonesia Tel: (+62) 021 6259 135 E-mail: support.id@tp-link.com Service time: Monday to Friday 9:00 -12:00; 13:00 -18:00 *Except public holidays
Malaysia Tel: 1300 88 875465 (1300 88TPLINK) E-mail: support.my@tp-link.com Service time: 24hrs, 7 days a week	Germany/Austria Tel: +49 1805 875465 (German Service) +49 1805 1PLINK E-mail: support.de@tp-link.com Fee: 0.14 EUR/min from the German fixed phone network and up to 0.42 EUR/min from mobile phone Service time: Monday to Friday 9:00 AM to 6:00 PM. GMT+ 1 or GMT+ 2 (Daylight Saving Time in Germany) *Except bank holidays in Hesse
Switzerland Tel: +41 (0) 848 800998 (German Service) E-mail: support.ch@tp-link.com Fee: 4-8 Rp/min, depending on rate of different time Service time: Monday to Friday 9:00 AM to 6:00 PM. GMT+ 1 or GMT+ 2 (Daylight Saving Time)	Brazilian Toll Free: 0800-770-4337 (Portuguese Service) E-mail: support.br@tp-link.com Service time: Monday to Saturday 08:00 AM to 08:00 PM
Ukrainian Tel: +380 (44) 590-51-14 E-mail: support.ua@tp-link.com Service time: Monday to Friday 14:00 PM to 2:00 PM	Poland Tel: +48 (0) 801 080 618 / +48 22 7217563 (if calls from mobile phone) E-mail: support.pl@tp-link.com Service time: Monday to Friday 9:00 AM to 5:00 PM. GMT+1 or GMT+2 (Daylight Saving Time)
Russian Federation Tel: 8 (499) 754-55-60 8 (800) 250-55-60 (toll-free call from any RF region) E-mail: support.ru@tp-link.com Service time: From 18:00 to 18:00 (Moscow time) *Except weekends and holidays in Russian Federation	