

# Print Server Application Guide

# Contents

<b>Overview .....</b>	<b>1</b>
<b>Installation for Windows OS .....</b>	<b>2</b>
<b>Application for Windows OS .....</b>	<b>5</b>
How to launch/exit the TP-LINK USB Printer Controller .....	6
How to Print.....	6
How to scan.....	9
Other functions/ settings.....	15
<b>Installation for Mac OS.....</b>	<b>17</b>
<b>Application for Mac OS.....</b>	<b>19</b>
How to Launch/Exit the TP-LINK USB Printer Controller.....	19
How to Print.....	20
How to Scan .....	23
Other functions/ settings.....	29
<b>Troubleshooting .....</b>	<b>31</b>

# Overview

Print server is a function embedded in your modem router. It allows you to share your printer with computers that are connected to the modem router.

## Typical Topology

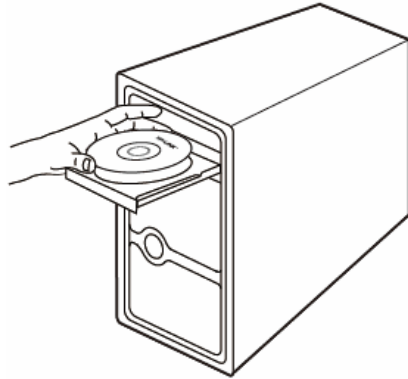


### **Note:**

- (1) Before connection, please check the **Printer Compatibility List** to verify whether your printer is supported by the modem router. You can refer to **Troubleshooting** for downloading the Printer Compatibility List.
- (2) Make sure you have already installed the printer's driver on your computer. Otherwise, please install it first.
- (3) Any computer in your LAN must first install the software if it wants to share the print server via the modem router.
- (4) Here in this guide, we take the configuration procedures of TD-W8980 for example.

# Installation for Windows OS

1. Insert the modem router's Resource CD into the CD-ROM drive.



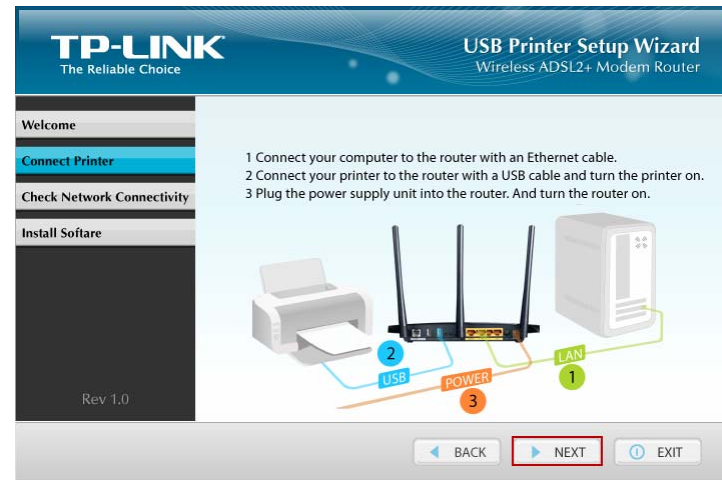
2. Select your modem router model and click **Printer Sharing Setup**.



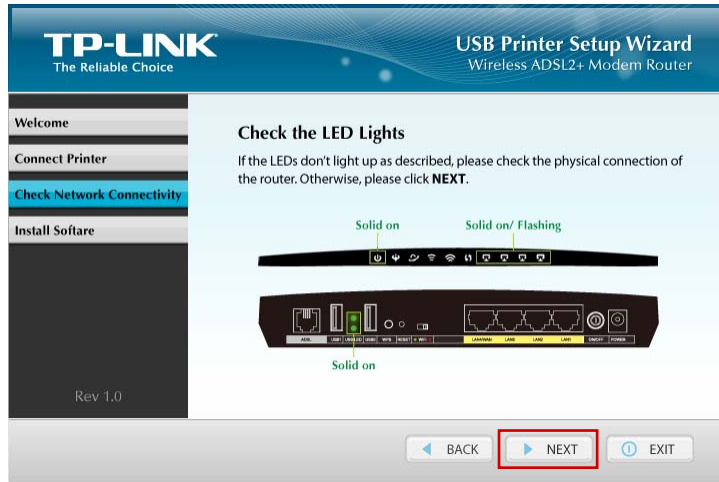
3. Click **START**.



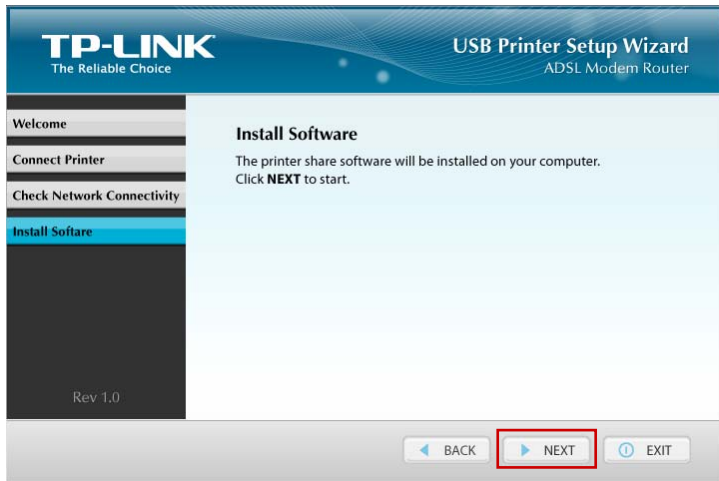
4. Connect your computer and printer to the modem router step by step as instructed. Click **NEXT**.



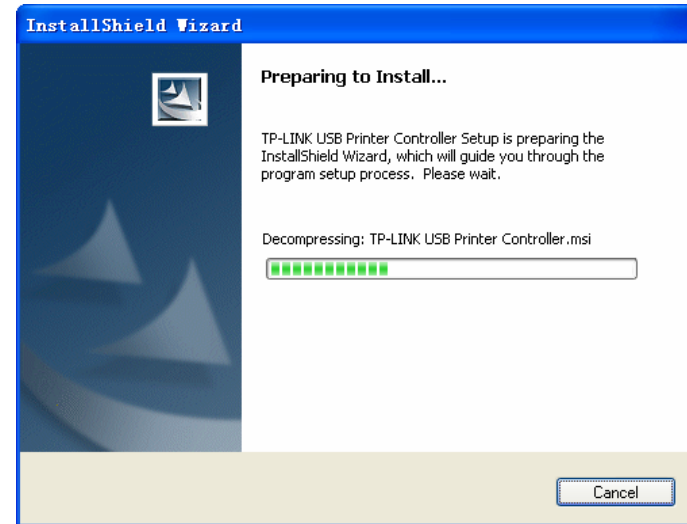
5. Check the LED lights and click **NEXT**.



6. Click **NEXT** to start installing the printer share software.



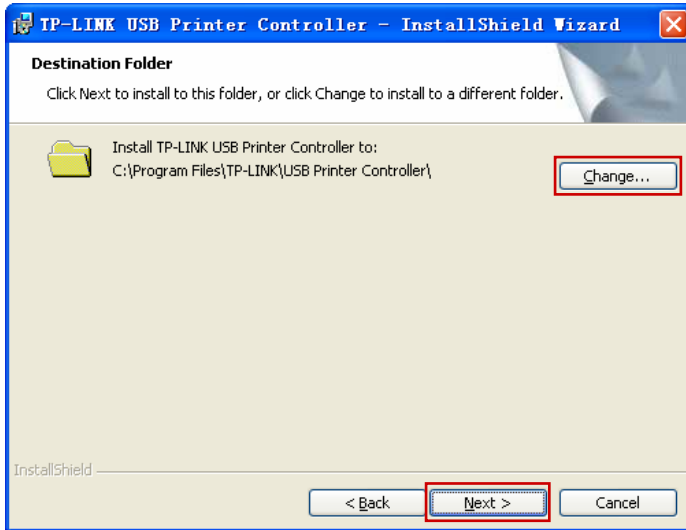
7. Please wait a moment for the installation preparation.



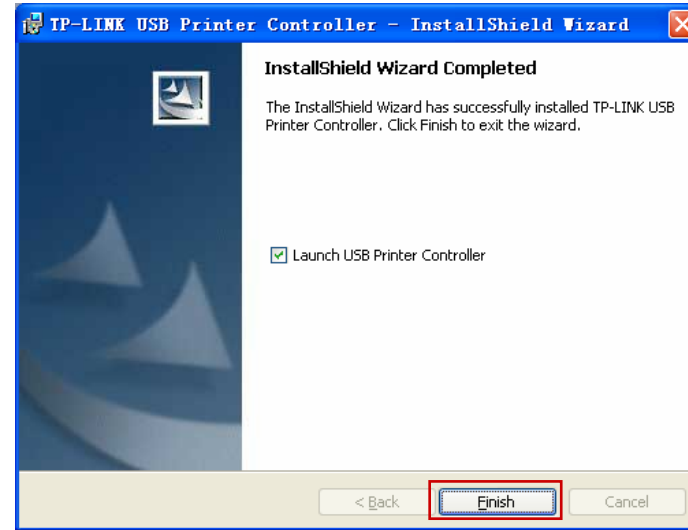
8. Click **Next** and go on to install the TP-LINK USB Printer Controller.



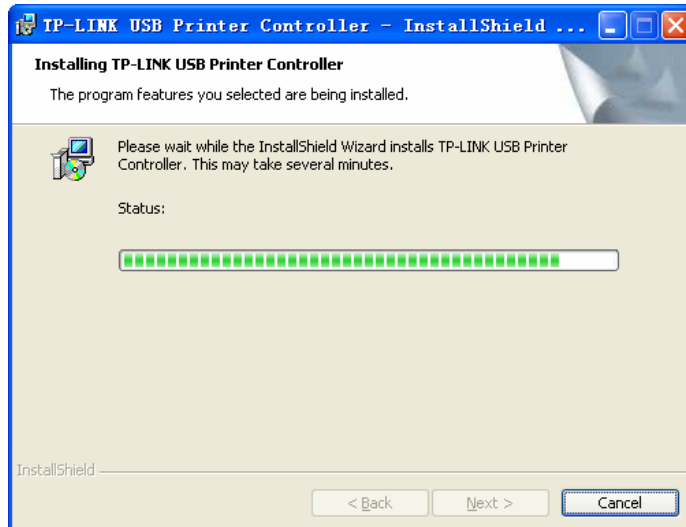
9. Click **Change...** to select another destination folder, or leave it default and click **Next**.



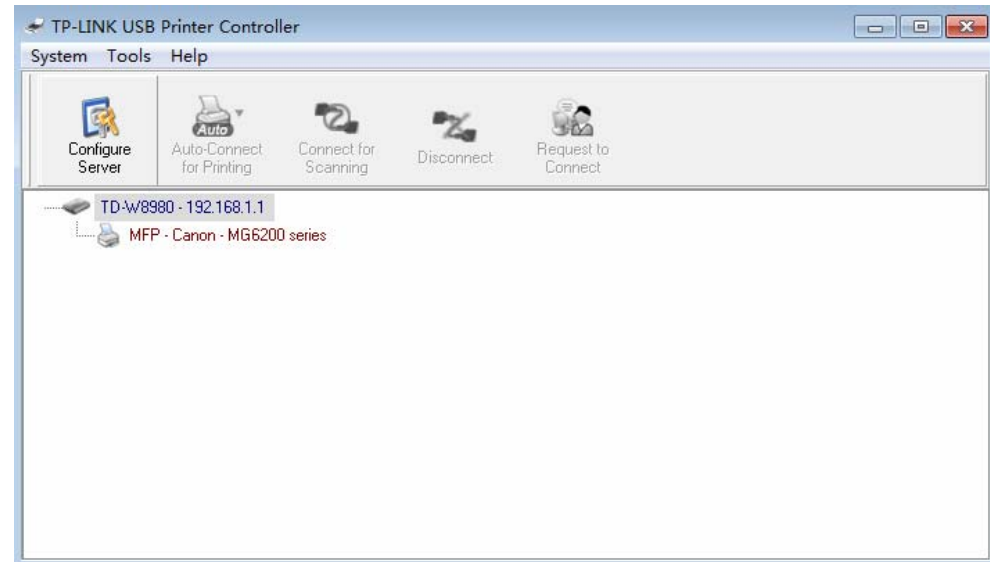
11. Click **Finish** to complete and exit the InstallShield Wizard.



10. Please wait a while for the installation process.




When the installation is completed, the TP-LINK USB Printer Controller will pop up, with whose help you can print documents via the modem router now.




**Note:**

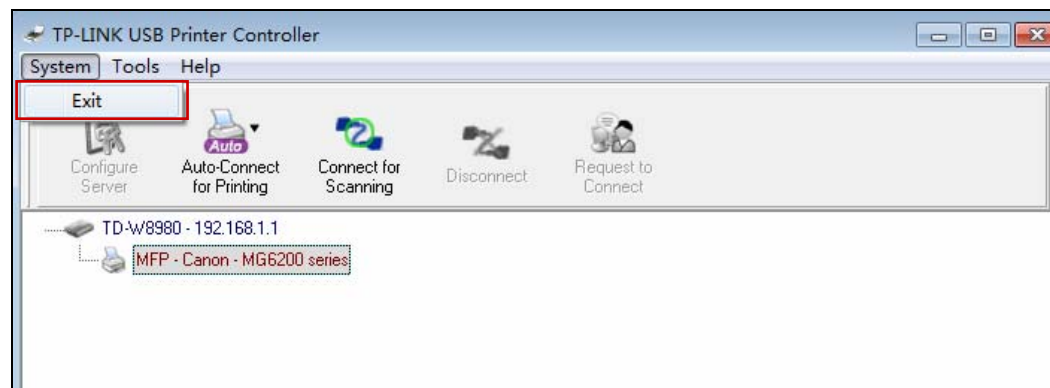
In your LAN, each computer that wants to share the print server should also install the **TP-LINK USB Printer Controller**. Please follow the previous steps to configure other computers in your LAN.

# Application for Windows OS

TP-LINK USB Printer Controller is used to operate the USB Printer on your own computer. After successful installation, the icon  will appear on the desktop of your computer.

## How to launch/exit the TP-LINK USB Printer Controller

- To launch the USB Printer Controller, double-click the icon  on your desktop.
- To exit the USB Printer Controller, click **System->Exit** on the TP-Link USB Printer Controller.

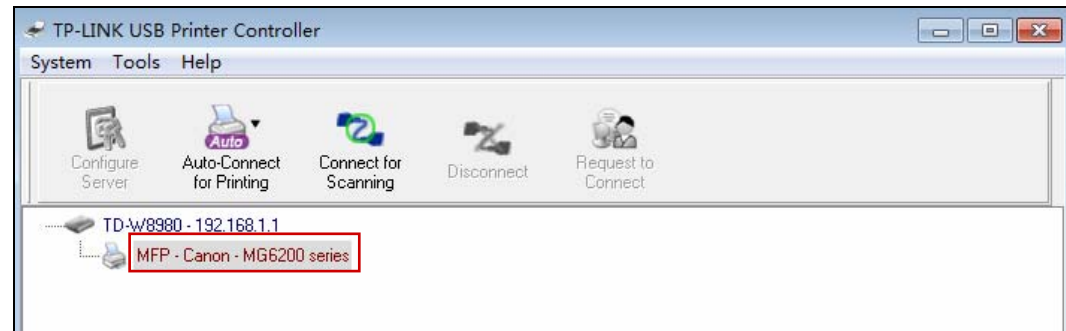


## How to Print

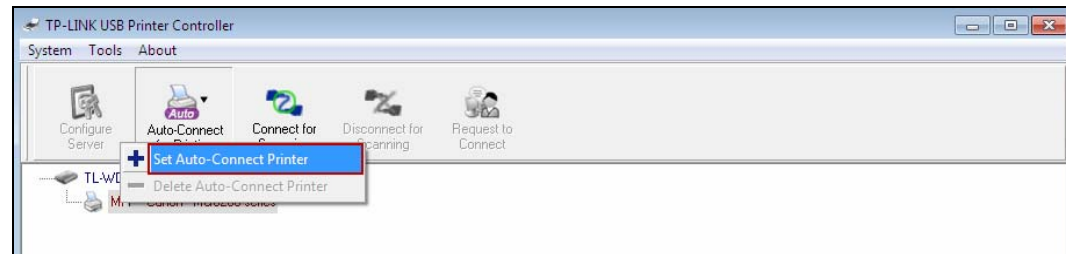
To print, first of all, you need to set your **Auto-Connect Printer**. After successful setting, you can execute your printing tasks automatically. Please follow the steps below to set your auto-connect printer.



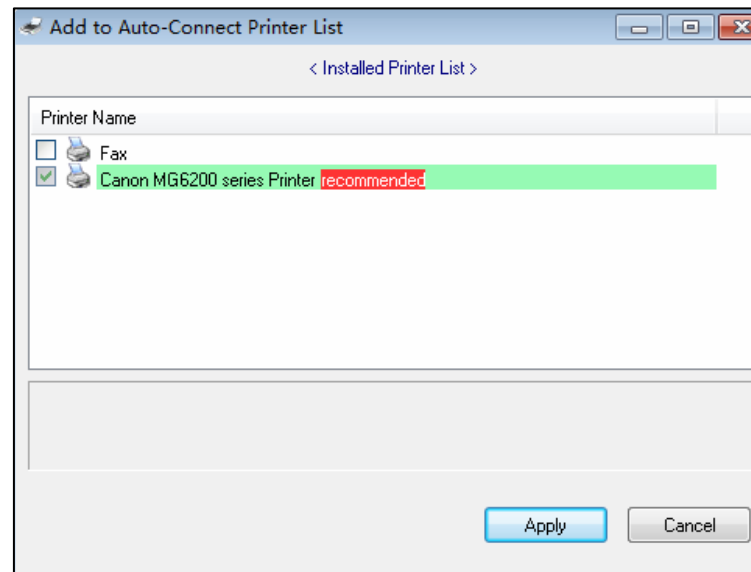
**Step 1:** Highlight the printer you want to set as auto-connect printer.



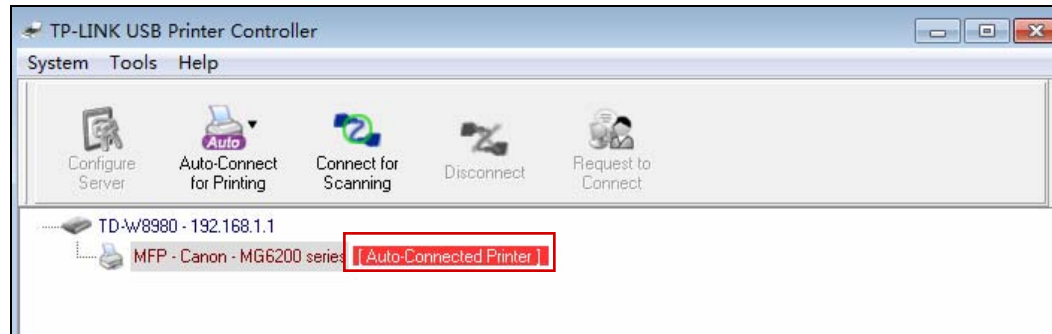
**Step 2:** Click the inverse triangle mark on the **Auto-Connect for printing** tab to pull down the list, where you can select **Set Auto-Connect Printer**.



**Step 3:** Tick the name of the printer you would like to set as auto-connect printer, and then click **Apply**.



After successful setting, you will see the printer marked as **Auto-Connected Printer**. Then you can execute your printing task freely.



If you want to disable your printer's auto-connect function, you can delete it.

### Method One:

Select **Delete Auto-Connect Printer** from the drop-down list of the **Auto-Connect for Printing** tab.

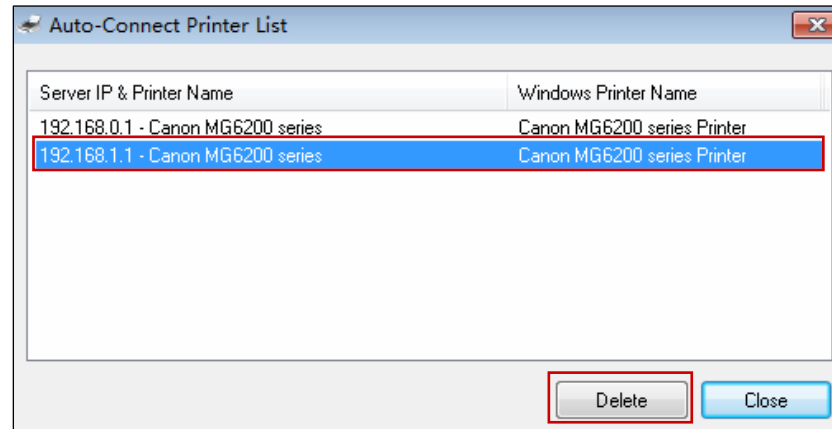


### Method Two:

1. Go to **Tools->Auto-Connect Printer List**.



2. Highlight your auto-connect printer and then click **Delete**.

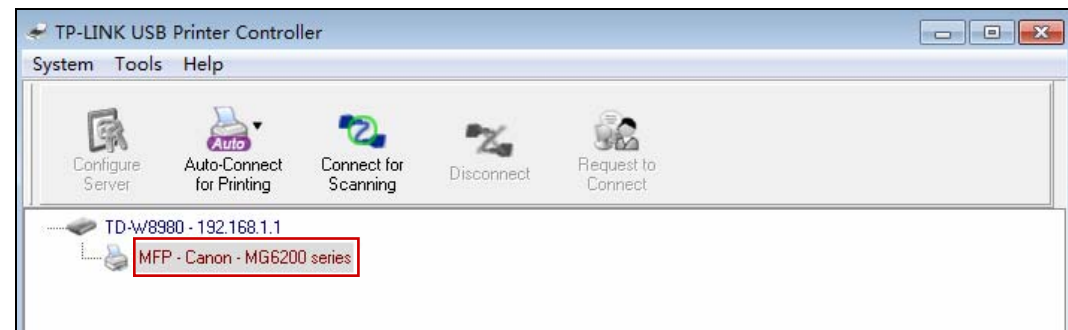


## How to scan

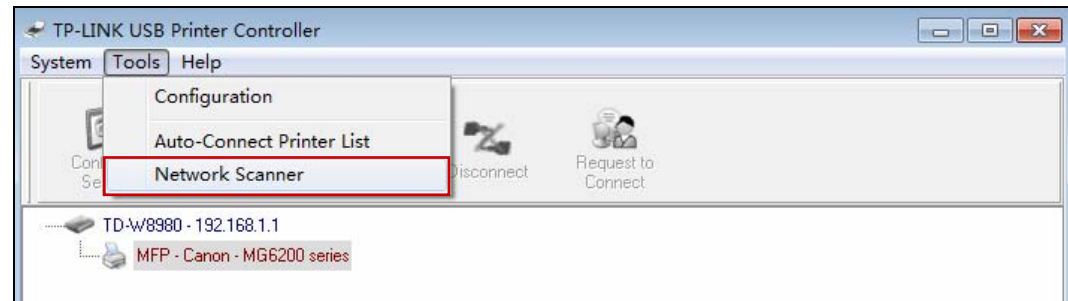
There are two methods available to realize the scanning function.

### Method One: Network Scanner

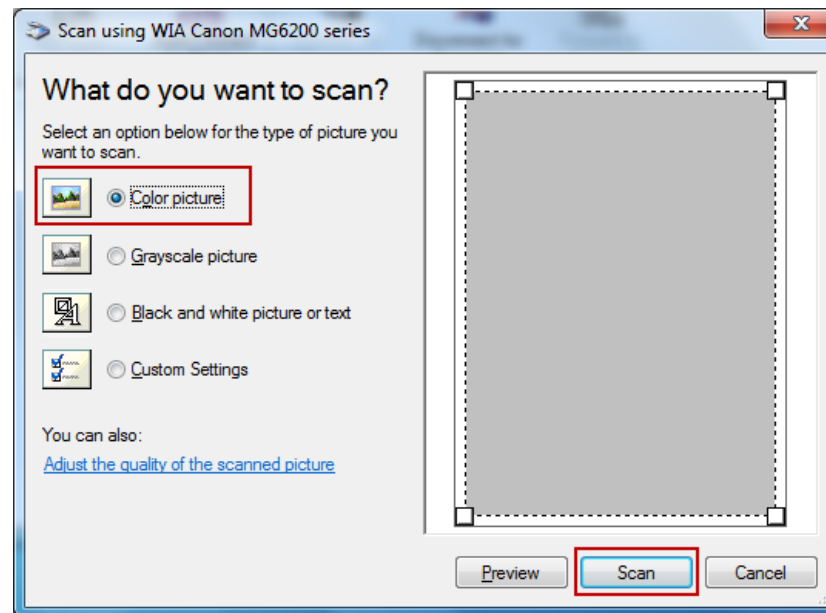
**Step 1:** Highlight your scanner or MFP.



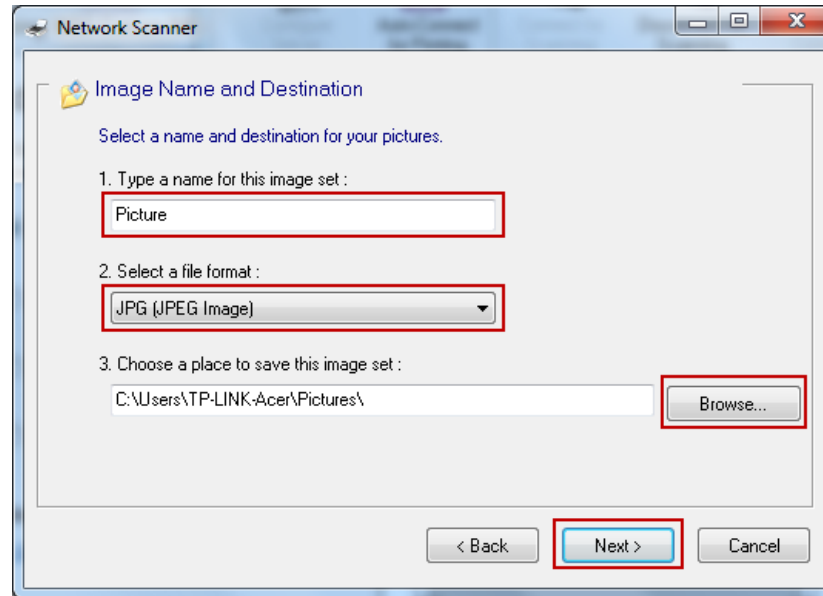
**Step 2:** Click *Tools* and then select *Network Scanner*.



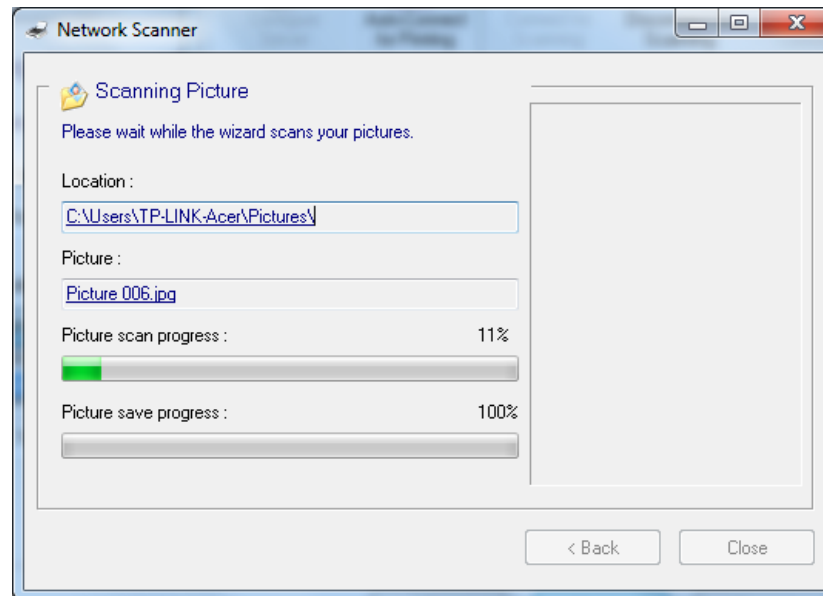
**Step 3:** Select the type of picture you want to scan, and then click *Scan*.



**Step 4:** Name the image set, select the file format, and choose the file destination by clicking **Browse...** or leave it default. Then click **Next**.

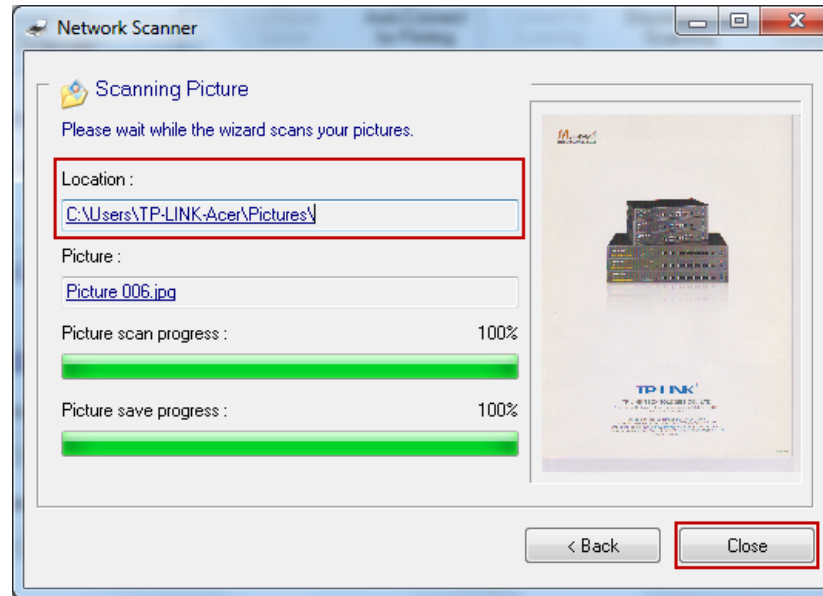


**Step 5:** Wait a while for the scan process.



**Step 6:** When it is 100% processed and saved, please click **Close** to complete it.

Then go to the location you've chosen in the previous **Step 4** and find your picture scanned.

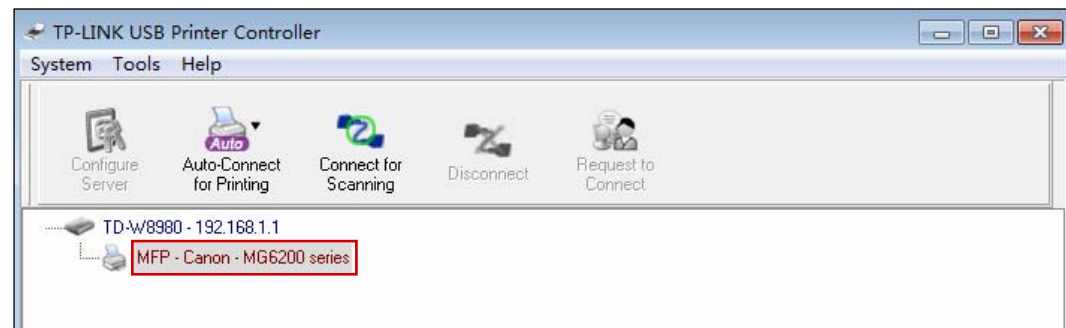


## Method Two: Connect for Scanning

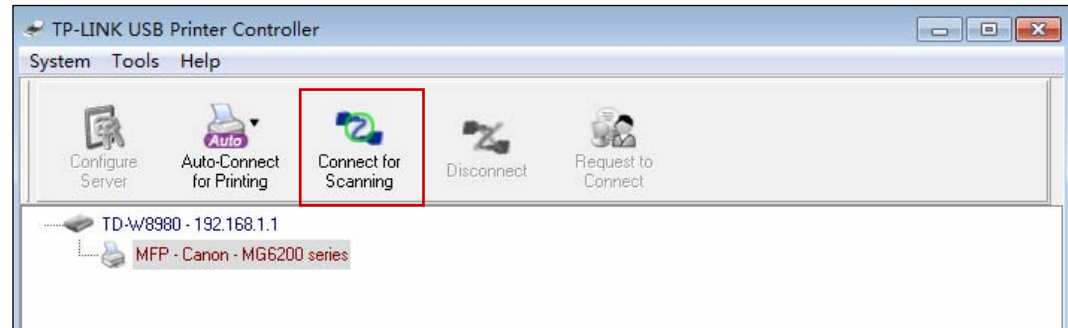
### **Note:**

If you choose this method for scanning, no one else in your LAN can share the scanner or MFP to either print or scan, until you click the tab **Disconnect for Scanning** to release it or accept their **Request to Connect**.

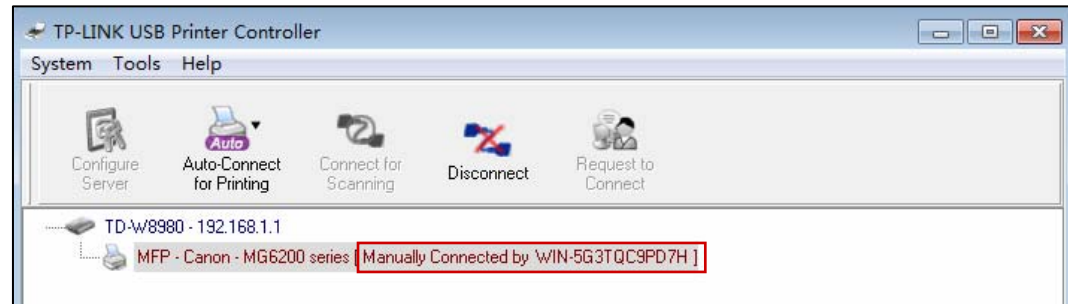
**Step 1:** Highlight your scanner or MFP.



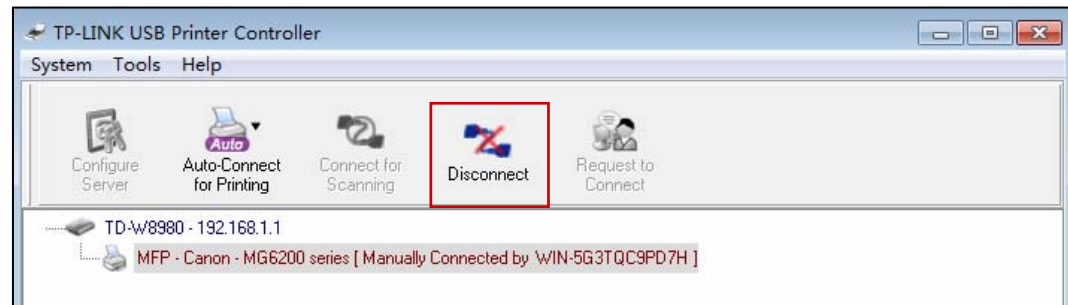
**Step 2:** Click the tab **Connect for Scanning**.



Successfully set and ready for scanning, it will display **Manually Connected by...**, when you can start your scanning task.



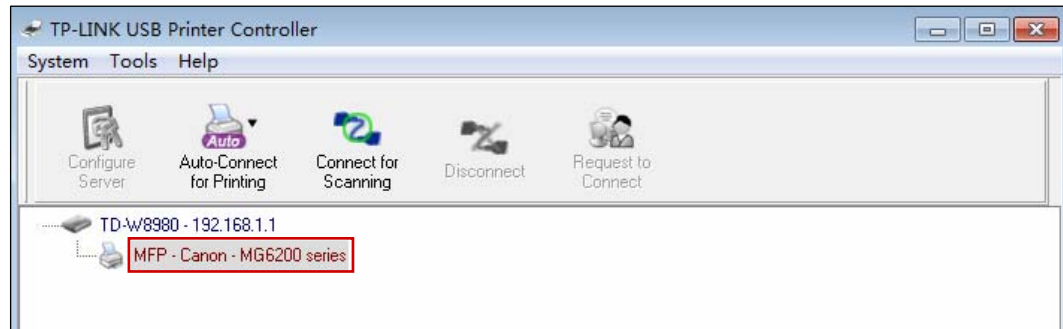
**Step 3:** After finishing your scanning task, please do remember to click the tab **Disconnect** to release the scanner or MFP.



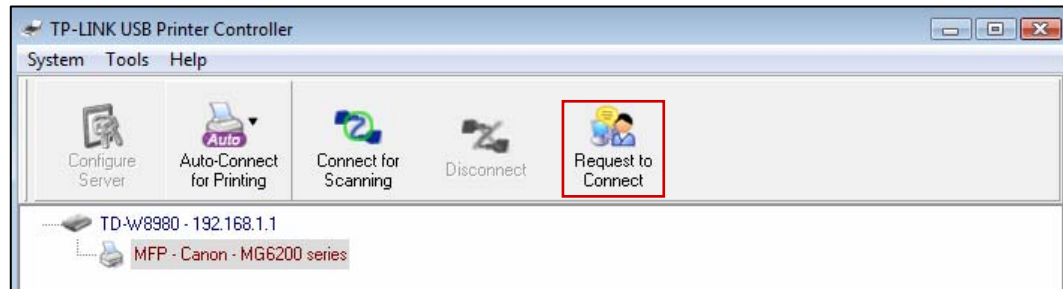
➤ **Request to Connect**

When one computer in your LAN **Connects for Scanning**, it is occupying the scanner or MFP; then if you would like to use the printer as well, you will have to **Request for Connect**.

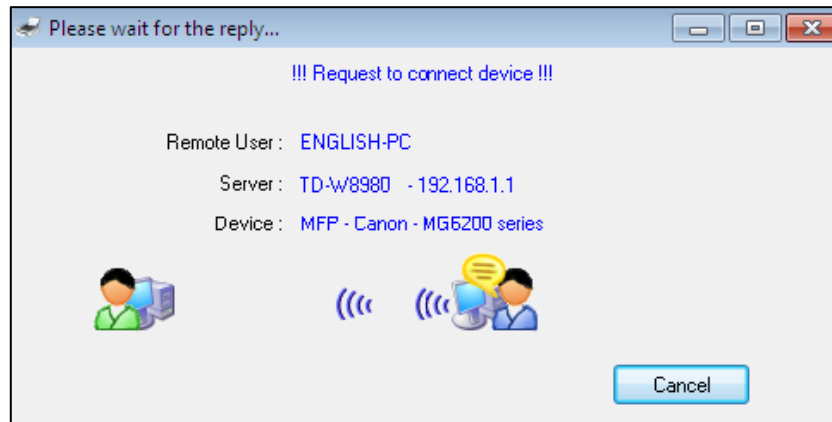
**Step 1:** Highlight the scanner or MFP you want to share for printing or scanning.



**Step 2:** Click the tab *Request to Connect*.



**Step 3:** You will be prompted a window that transmits your request. Please wait patiently for the reply.





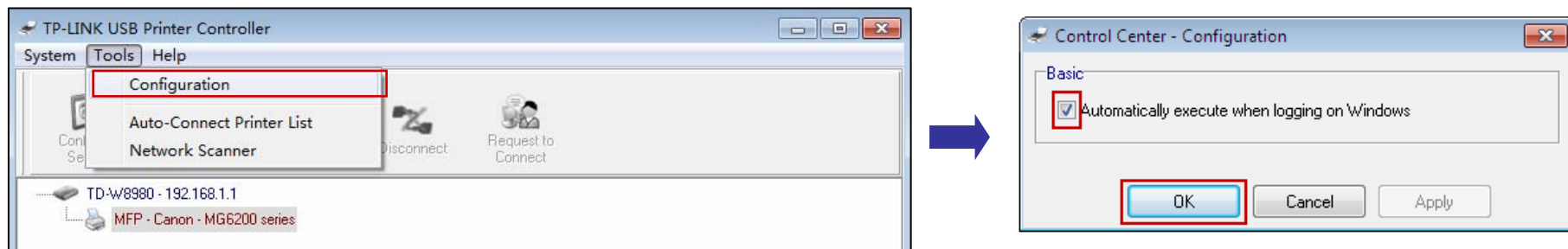
**Step 4:** If the other user **Accepts** your request to connect, please click **Exit** to start your printing or scanning task.



## Other functions/ settings

### ➤ Configuration

Go to **Tools-> Configuration**, tick the option **Automatically execute when logging on Windows**, and then click **OK**.



With this setting, the TP-LINK USB Printer Controller will run automatically every time you log on your computer.

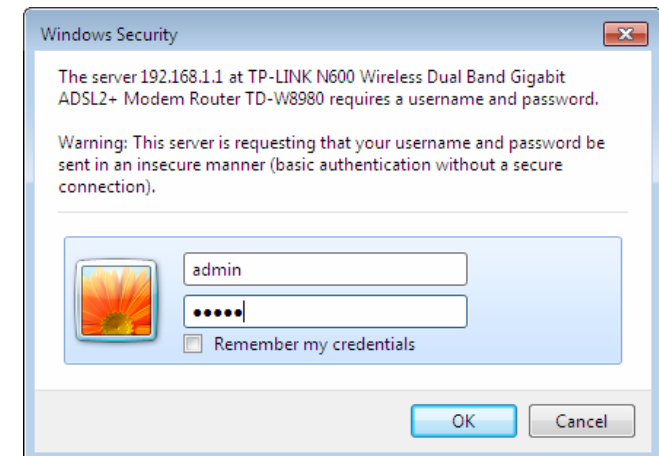
➤ **About**

Go to **Help -> About**, a window will pop up and display some relevant information about this Printer Controller.



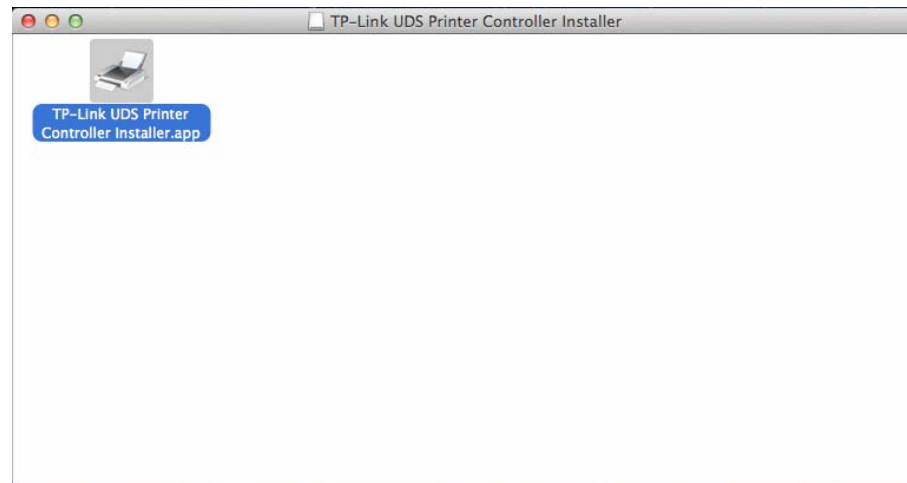
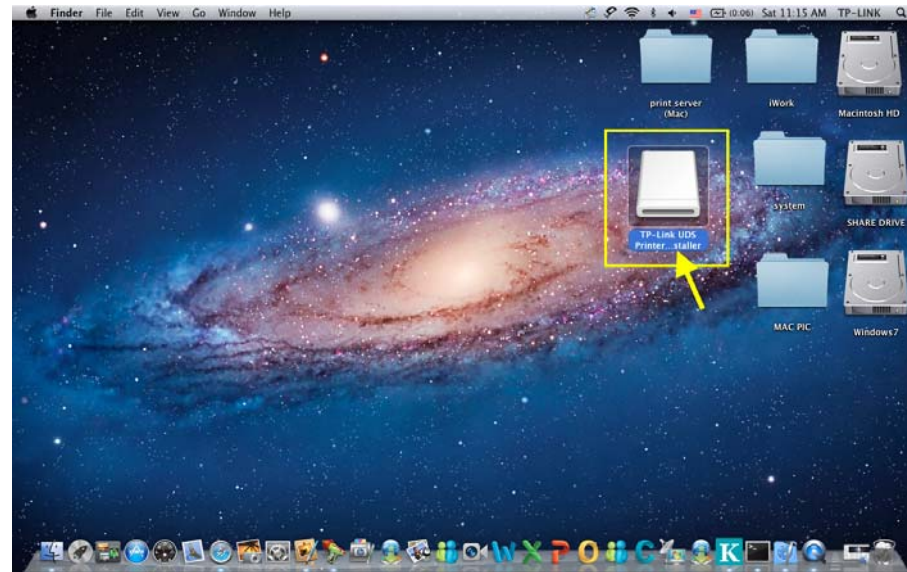
➤ **Configure Server**

Highlight the modem router and click the tab **Configure Server**; the login window of the modem router will pop up. You need to enter the user name and password (both are **admin** by default.) to log in the web-based management page of the modem router.

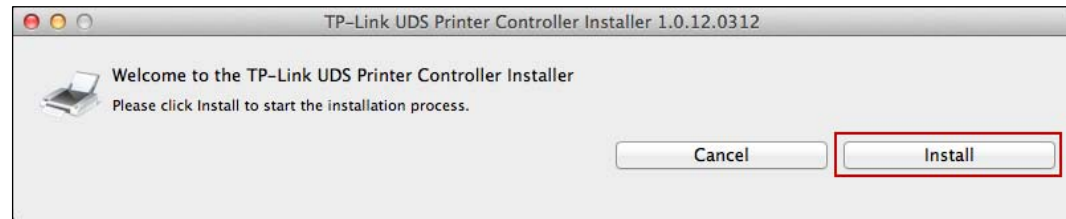


# Installation for Mac OS

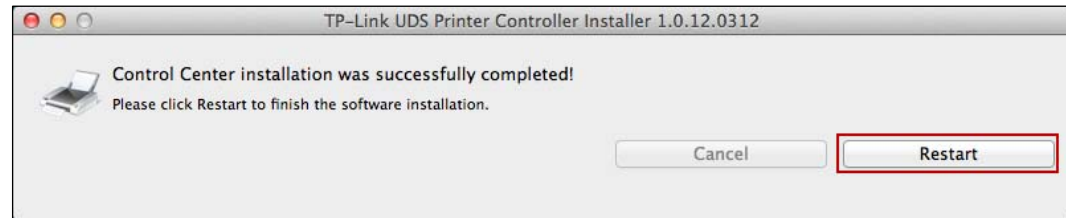
1. Download the setup software **TP-Link UDS Printer Controller Installer.dmg** from our website: [www.tp-link.com](http://www.tp-link.com).
2. Double-click the software you've downloaded.
3. Double-click the **TP-Link UDS Printer Controller Installer.app** in the window that pops up.



4. Click ***Install*** to start the installation process.




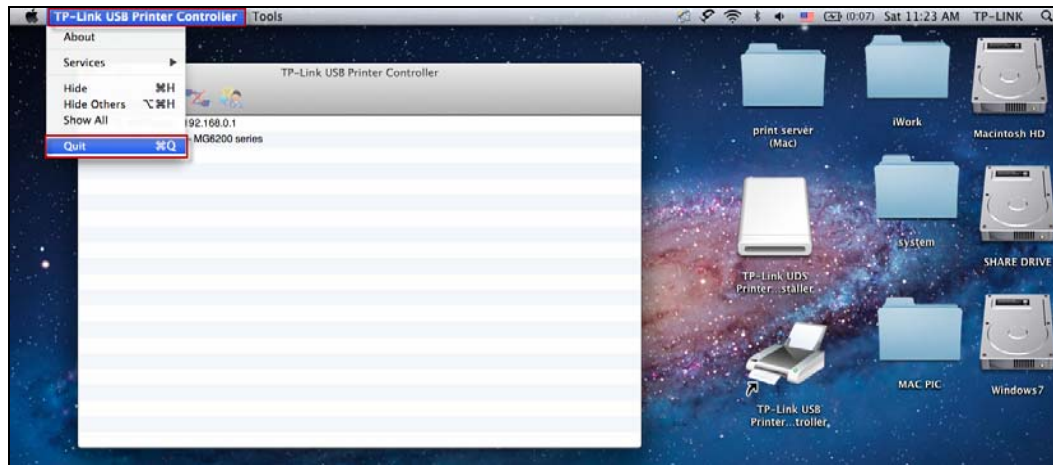
5. Click ***Restart*** to finish the software installation.




# Application for Mac OS

## How to Launch/Exit the TP-LINK USB Printer Controller

- To launch the USB Printer Controller, double-click the icon  on your desktop.
- To exit the USB Printer Controller, you have two ways:
  - Click **TP-Link USB Printer Controller -> Quit**, when the printer controller is on the process. Or you can press the keyboard **command + Q** to quickly exit the controller.



- Left-click and hold the icon  in the dock for a while, then you can click **Quit** to exit the controller.

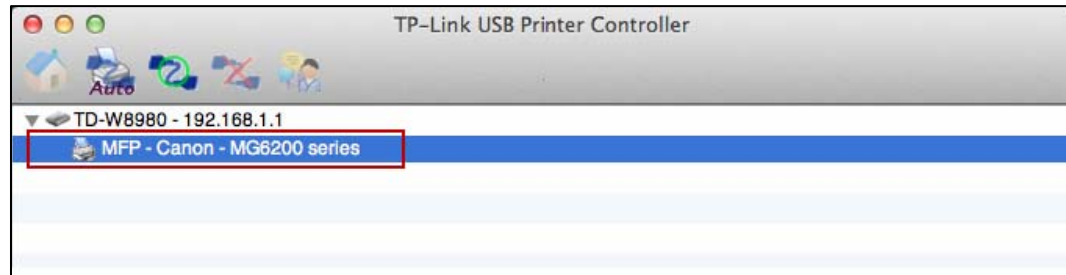


## How to Print

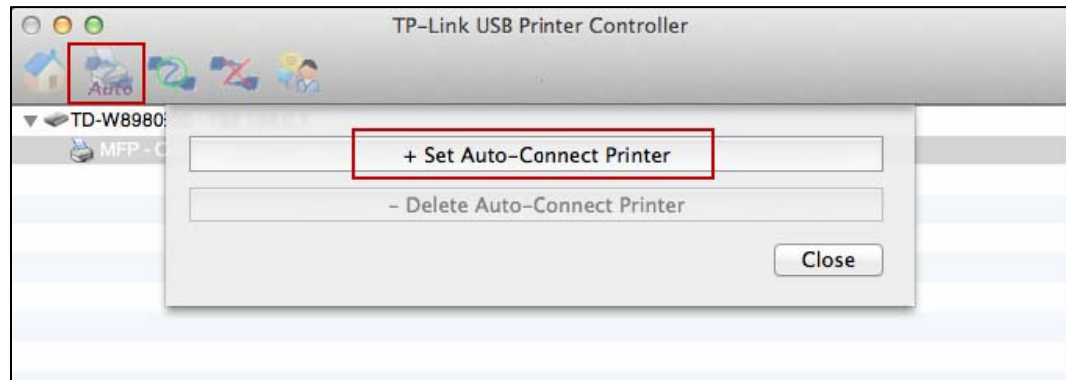
To print, first of all, you need to set your **Auto-Connect Printer**. After successful setting, you can execute your printing tasks automatically.

**Please follow the steps below to set your auto-connect printer.**

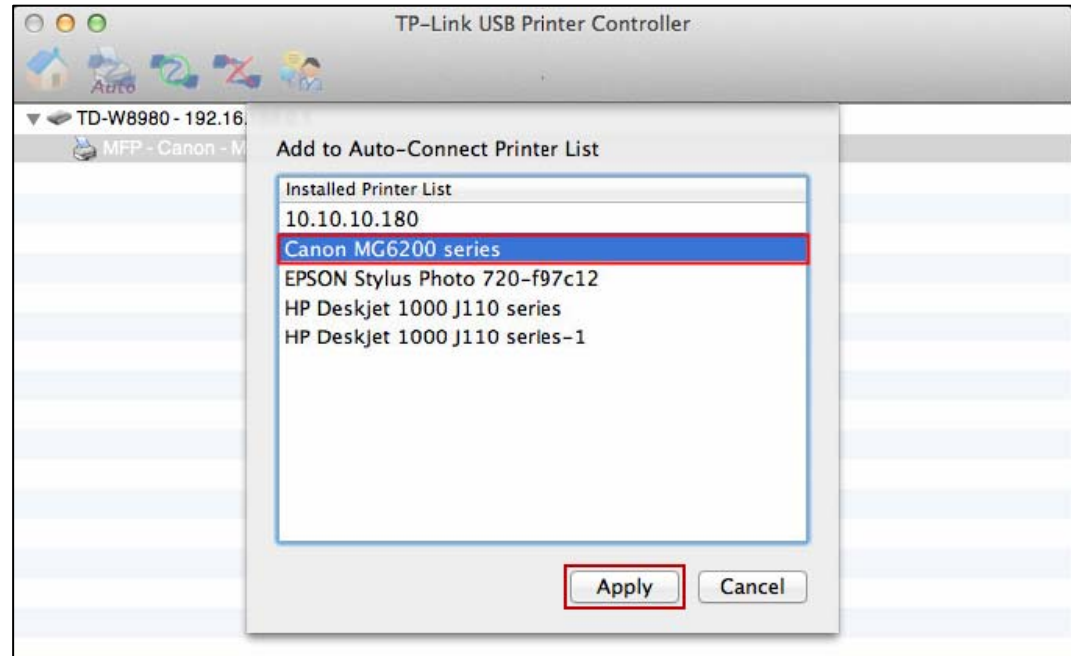
**Step 1:** Highlight your printer.



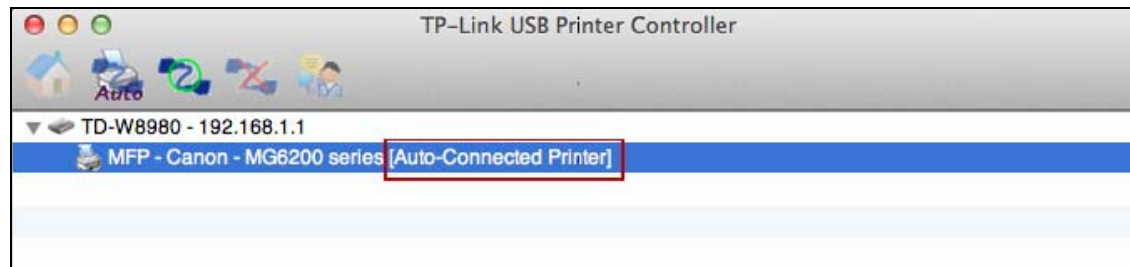
**Step 2:** Click the tab **Auto-Connect for printing** to pull down a list, where you can select **Set Auto-Connect Printer**.



**Step 3:** Select the printer you would like to set as auto-connect printer, and then click the **Apply** button.



After successful setting, you will see the printer marked as **Auto-Connect Printer**. Then you can execute your printing task freely.

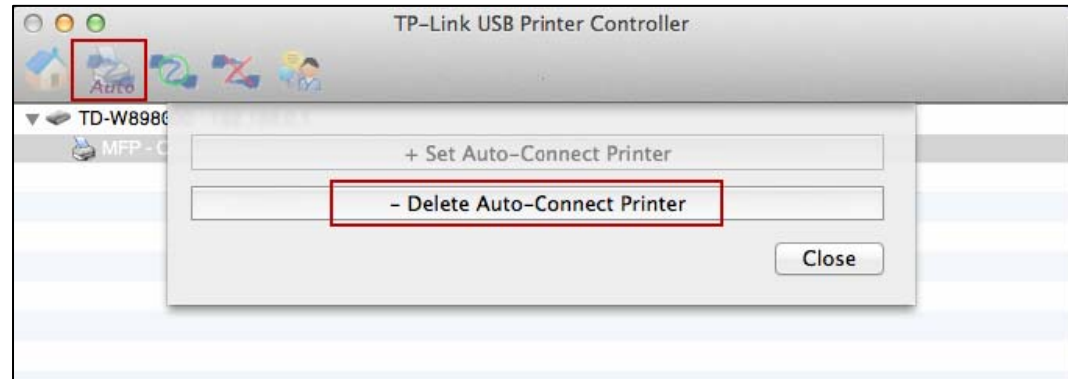




➤ If you want to disable your printer's auto-connect function, you can delete it.

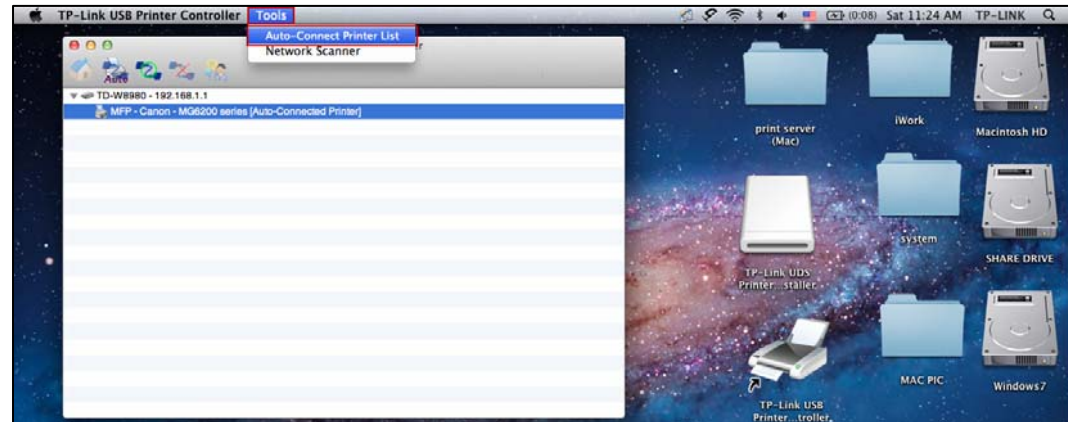
**Method One:**

Select **Delete Auto-Connect Printer** from the drop-down list of the tab **Auto-Connect for Printing**.



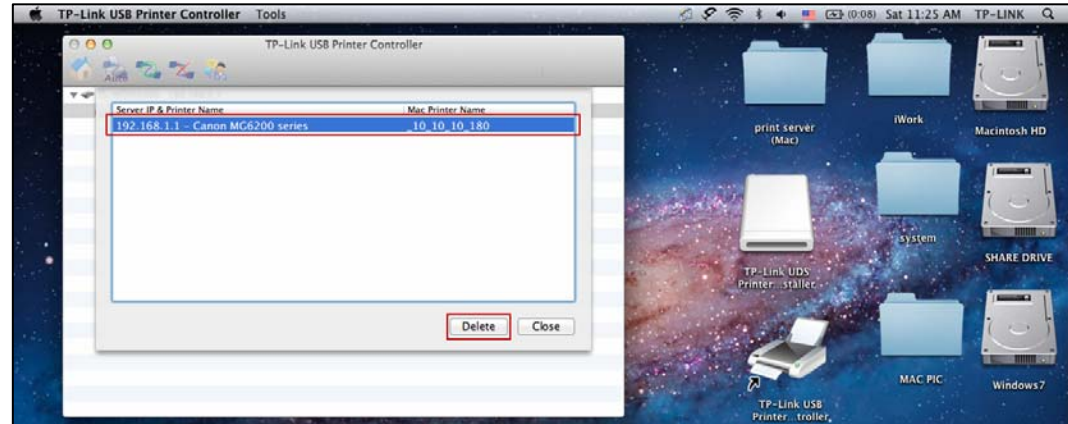
**Method Two:**

1. Go to **Tools->Auto-Connect Printer List**.





2. Highlight your auto-connect printer and then click **Delete**.

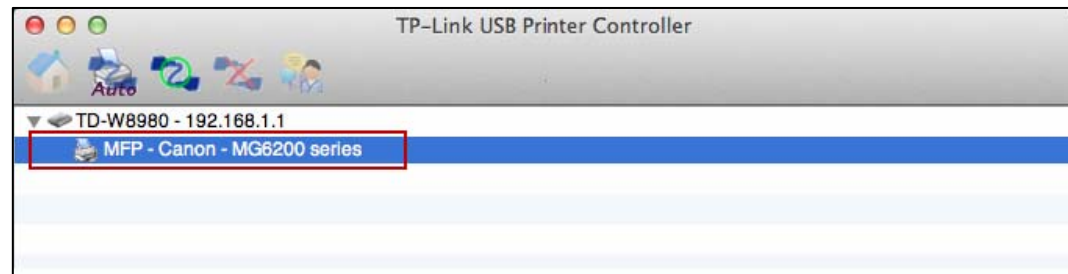


## How to Scan

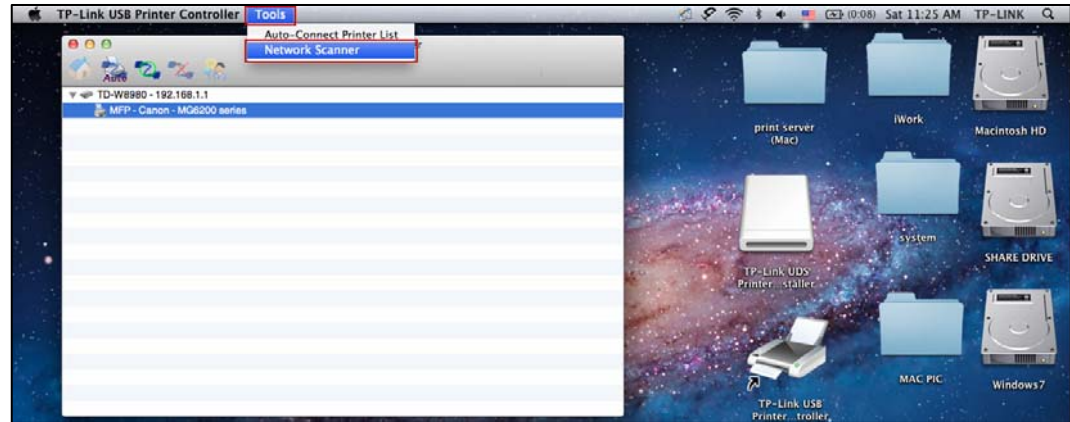
There are two methods available to realize the scanning function.

### Method One: Network Scanner

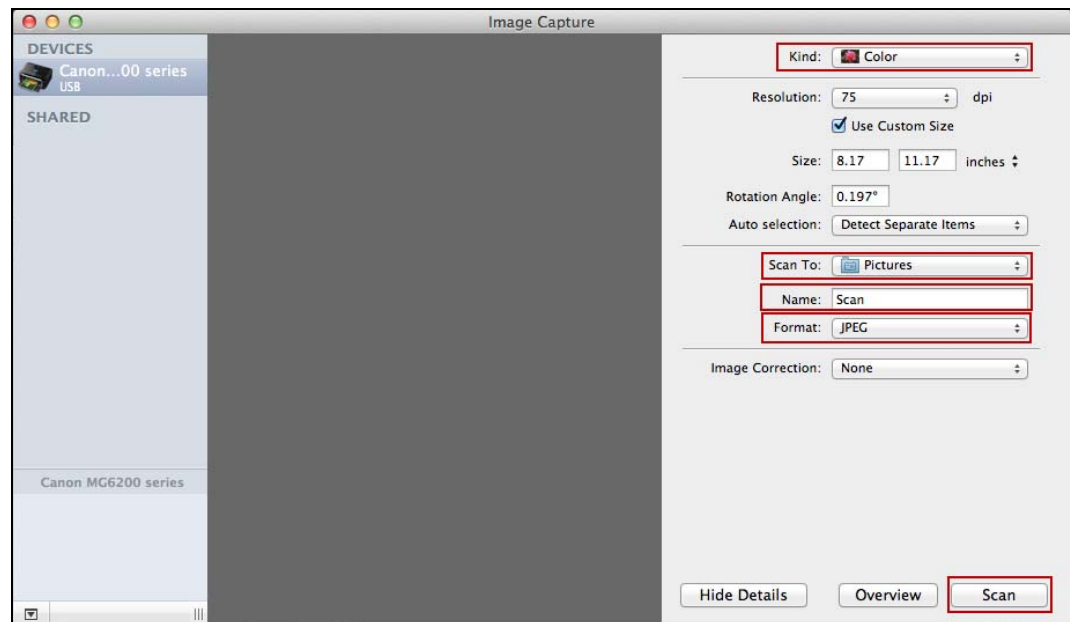
**Step 1:** Highlight your scanner or MFP.



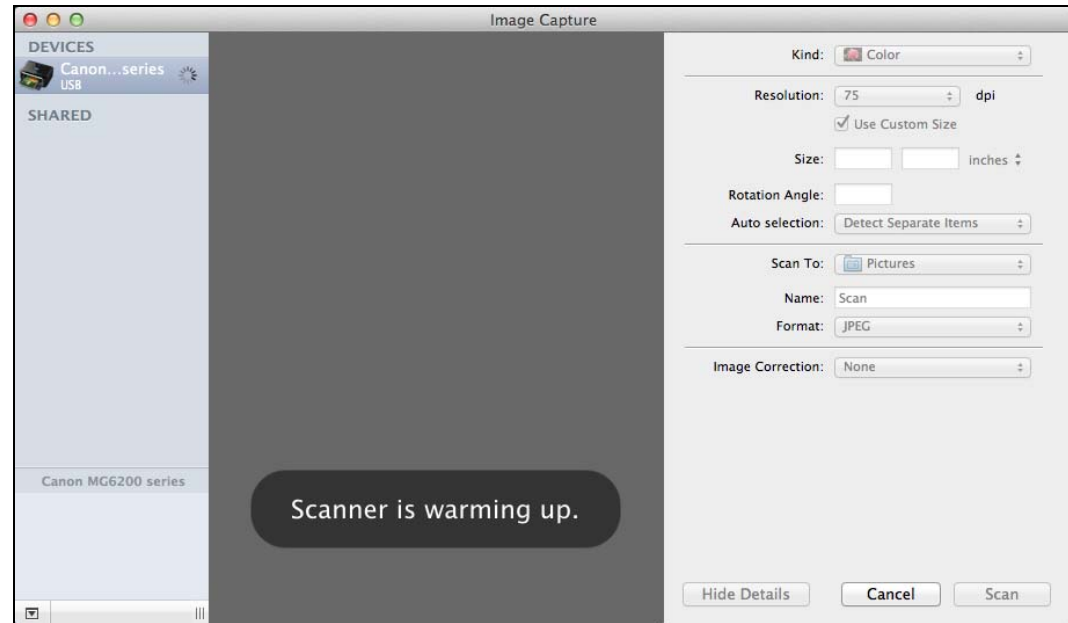
**Step 2:** Click *Tools* and then select *Network Scanner*.



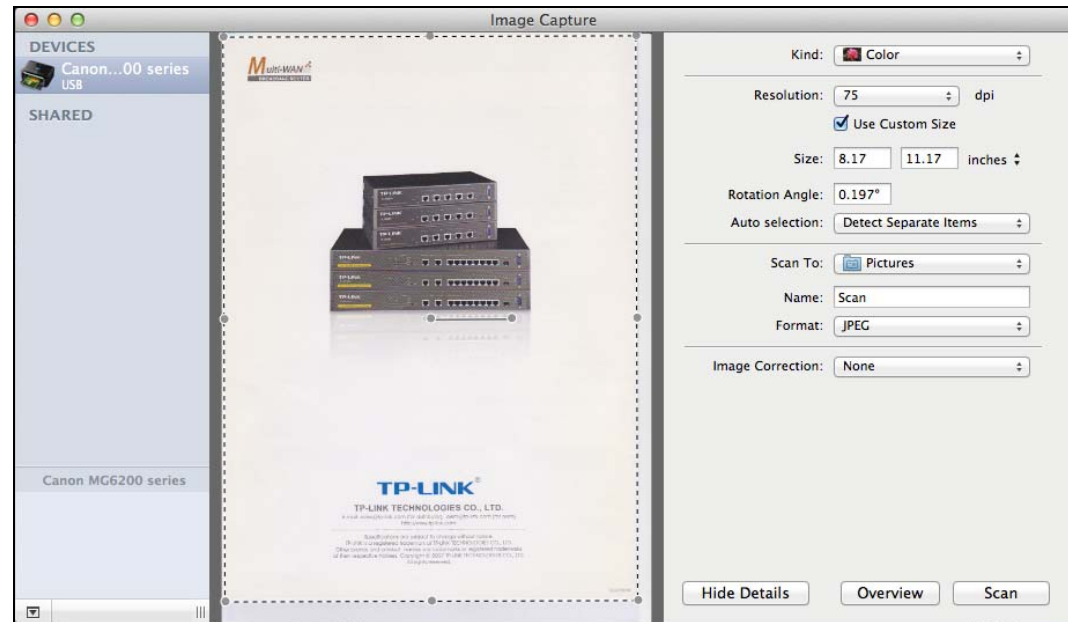
**Step 3:** Select the kind of picture you want to scan and the destination you want to save it; name your picture and select the format of it. Then click *Scan*.



**Step 4:** Wait a while for the scan process.



**Step 5:** When it is completed, you will see the scan result shown in the middle. Then go to the location you've chosen in the previous **Step 3** and find your picture scanned.

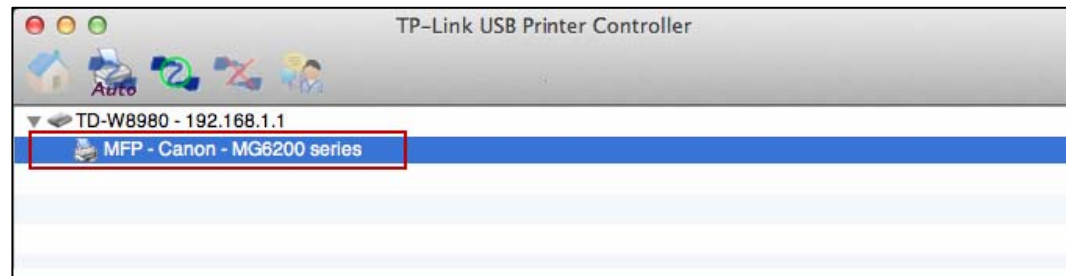


## **Method Two: Connect for Scanning**

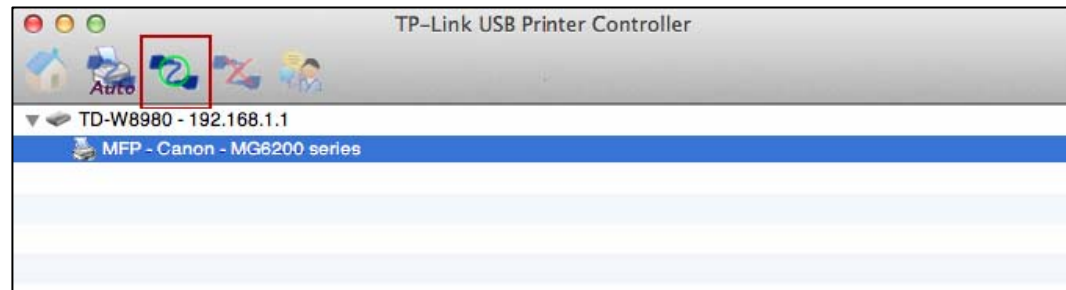
### **Note:**

If you choose this method for scanning, no one else in your LAN can share the scanner or MFP to either print or scan, until you click the tab **Disconnect for Scanning** to release it or accept their **Request to Connect**.

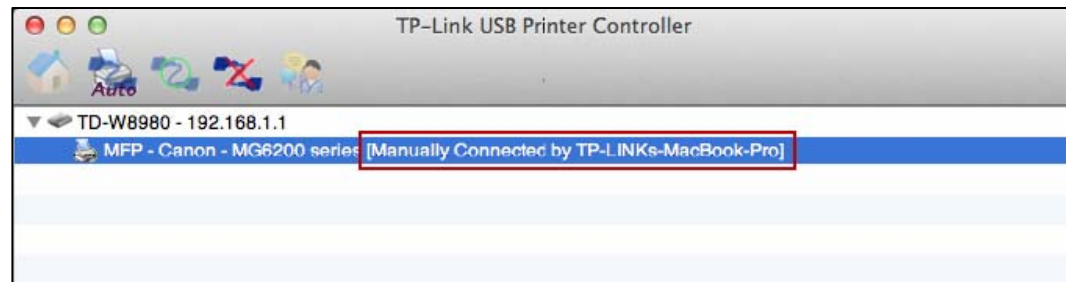
**Step 1:** Highlight your scanner or MFP.



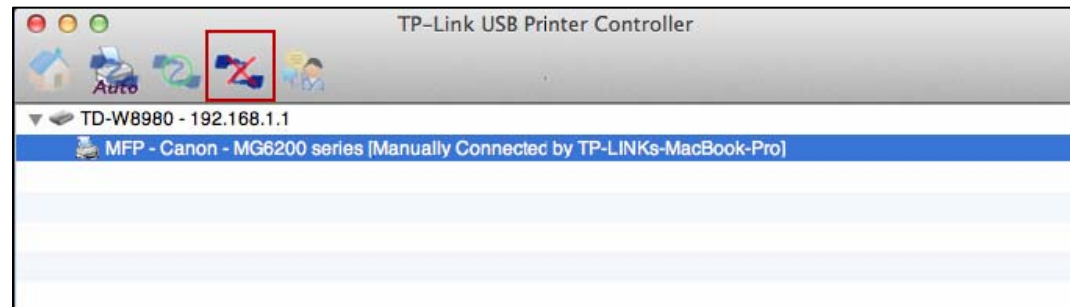
**Step 2:** Click the tab **Connect for Scanning**.



Successfully set and ready for scanning, it will display **Manually Connected by...**, when you can start your scan task.



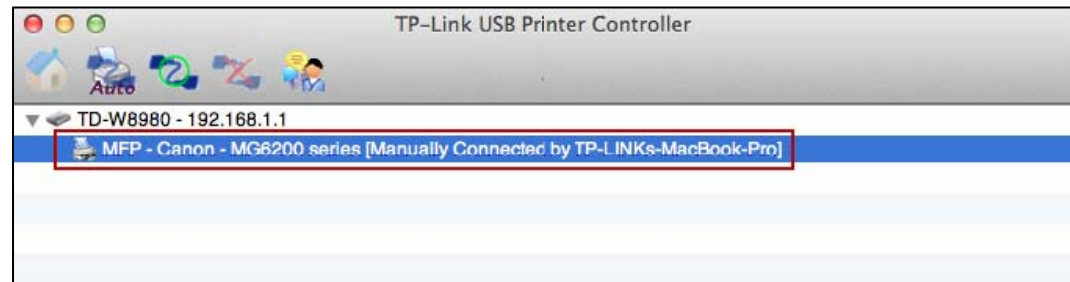
**Step 3:** After finishing your scan task, please do remember to click the tab **Disconnect for Scanning** to release the scanner or MFP.



➤ **Request to Connect**

When one computer in your LAN **Connects for Scanning**, it is occupying the scanner or MFP; then if you would like to use it as well, you will have to **Request for Connect**.

**Step 1:** Highlight the scanner or MFP you want to share for printing or scanning.



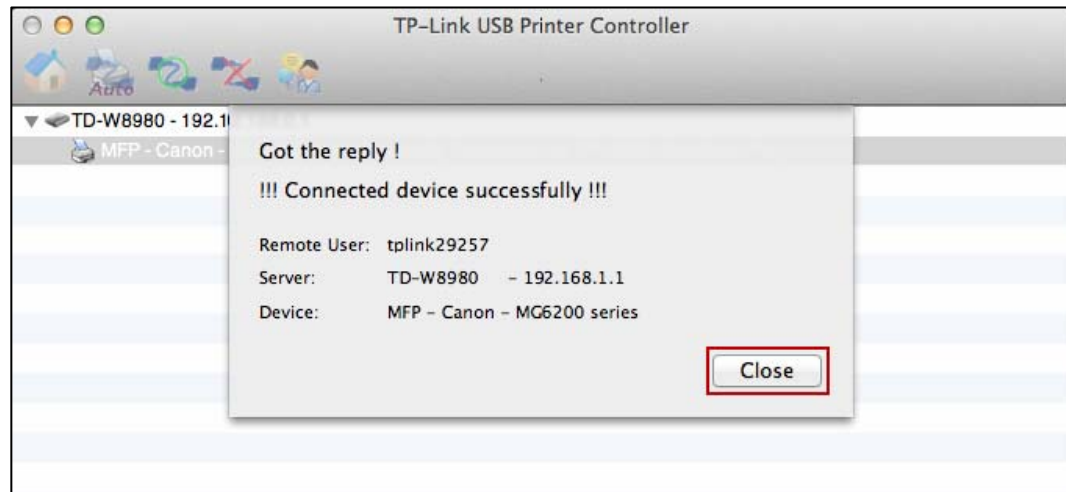
**Step 2:** Click the tab **Request to Connect**.



**Step 3:** You will be prompted a window that transmits your request. Please wait patiently for the reply.



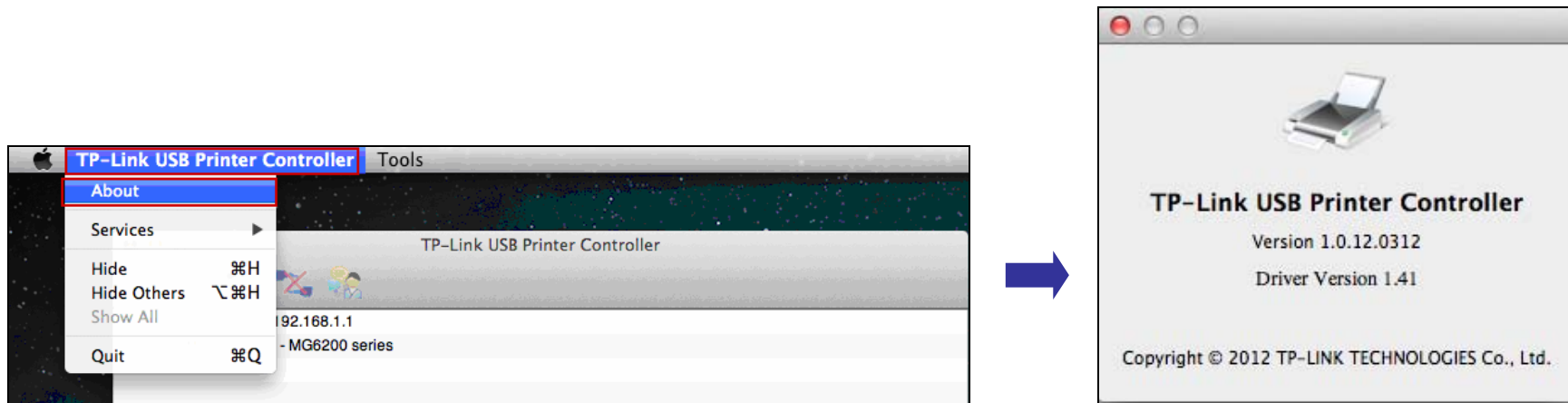
**Step 4:** If the other user **Accepts** your request to connect, please click **Close** to start your printing or scanning task.



## Other functions/ settings

### ➤ About

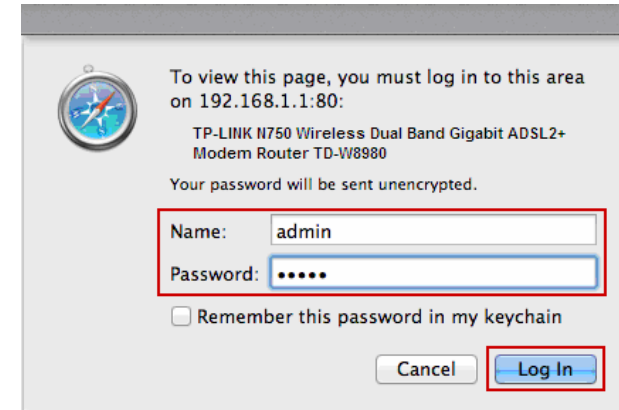
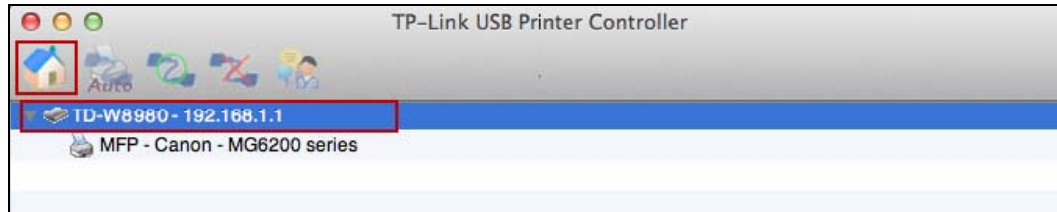
Go to **TP-Link USB Printer Controller -> About**; a window will pop up and display some relevant information about this printer controller.




### ➤ Configure Server

Highlight the Router and click the tab **Configure Server**, the login window of the Router will pop up. You need to enter the user name and password (both are **admin** by default.) to log in the web-based management page of the Router.





➤ **Open at Login**

Left-click and hold the icon  in the dock for a while, until you can select **Option > Open at Login**.



With this setting, the TP-LINK USB Printer Controller will run automatically every time you log on your Mac.



# Troubleshooting

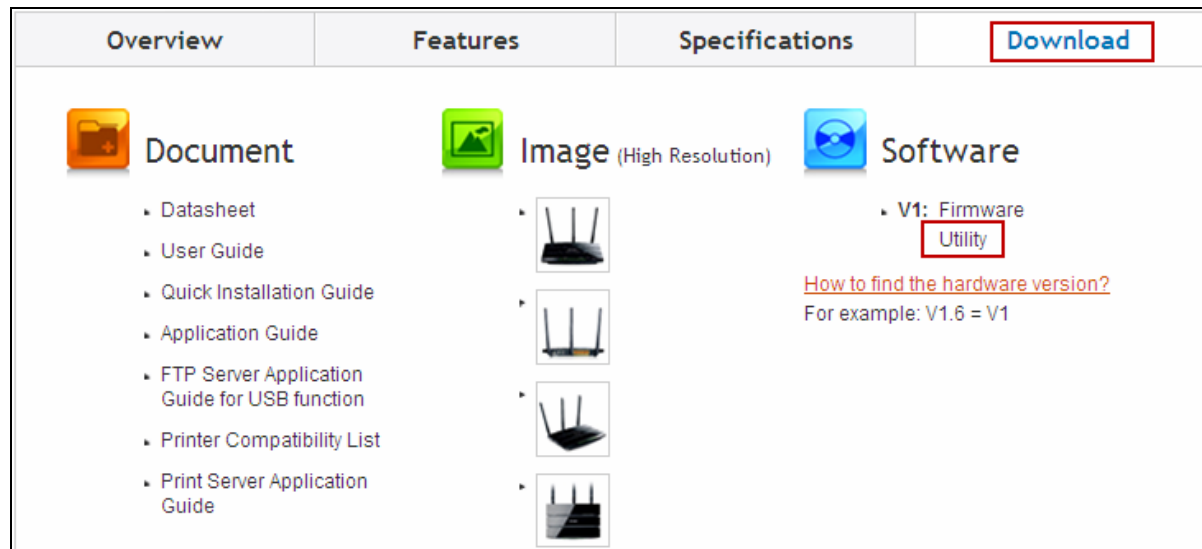
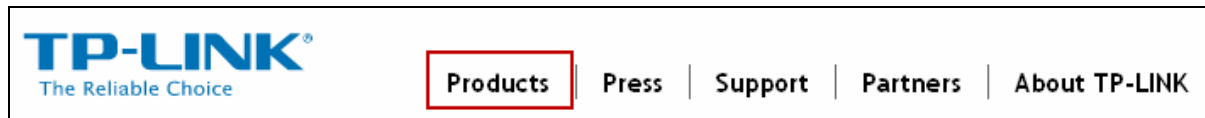
## 1. Where can I find the printer compatibility list?

Go to our website [www.tp-link.com](http://www.tp-link.com), then go to **Products** ->**ADSL**, find your product model and go to **Download** -> **Document** -> **Printer Compatibility List**.

The screenshot shows the TP-LINK website navigation and a product page. At the top, the TP-LINK logo is on the left, and a navigation menu contains 'Products', 'Press', 'Support', 'Partners', and 'About TP-LINK'. The 'Products' link is highlighted with a red box. A blue arrow points down to a product page with four tabs: 'Overview', 'Features', 'Specifications', and 'Download'. The 'Download' tab is highlighted with a red box. Below the tabs, there are three main sections: 'Document', 'Image (High Resolution)', and 'Software'. The 'Document' section contains a list of links: 'Datasheet', 'User Guide', 'Quick Installation Guide', 'Application Guide', 'FTP Server Application Guide for USB function', 'Printer Compatibility List' (highlighted with a red box), and 'Print Server Application Guide'. The 'Image' section shows four router icons. The 'Software' section shows a 'V1: Firmware Utility' link and a red link 'How to find the hardware version?' with the example 'For example: V1.6 = V1'.

## 2. Where can I find the relevant software for installation?

Go to our website [www.tp-link.com](http://www.tp-link.com), then go to **Products** ->**ADSL**, find your product model and go to **Download** ->**Software** -> **Utility**. Then next web page will be loaded, where you can select the **USB Printer Controller\_UTILITY** and download it.

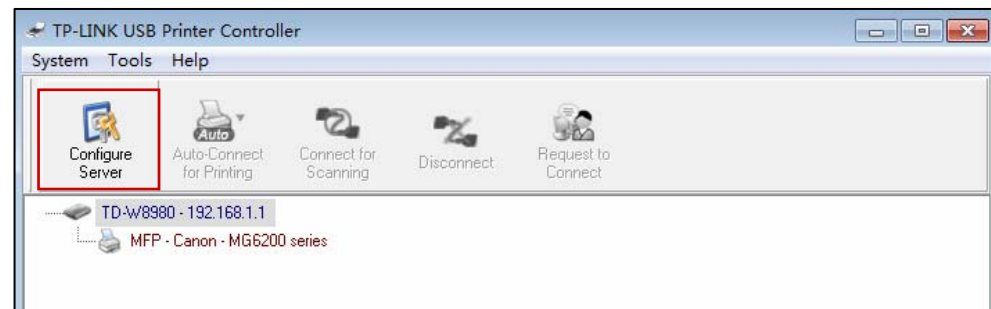


### 3. How to manage the print server on the web-based management page?

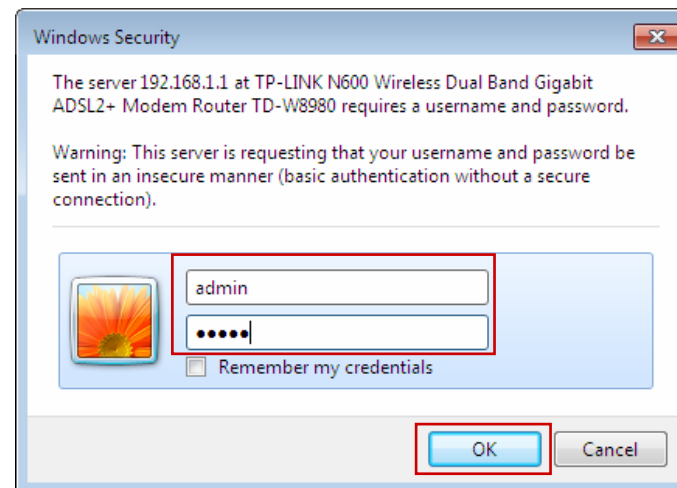
The modem router's Print Server function is enabled by default. To disable the function, you need to log onto the Web-based management page. See the following instructions (Here takes that in Windows 7 for example):

1) Make sure you have a PC or notebook connected to the modem router, either via wireless or wired connection.

2) Launch the TP-LINK USB Printer Controller, highlight the modem router and click the tab **Configure Server**.



3) After a moment, a login window will appear. Enter **admin** (in lower case letters) for both the User Name and Password. Then click the **OK** button or press the **Enter** key.



4) Go to **USB Settings -> Print Server**. Click **Stop** to disable the function. Click **Start** to enable the function.

